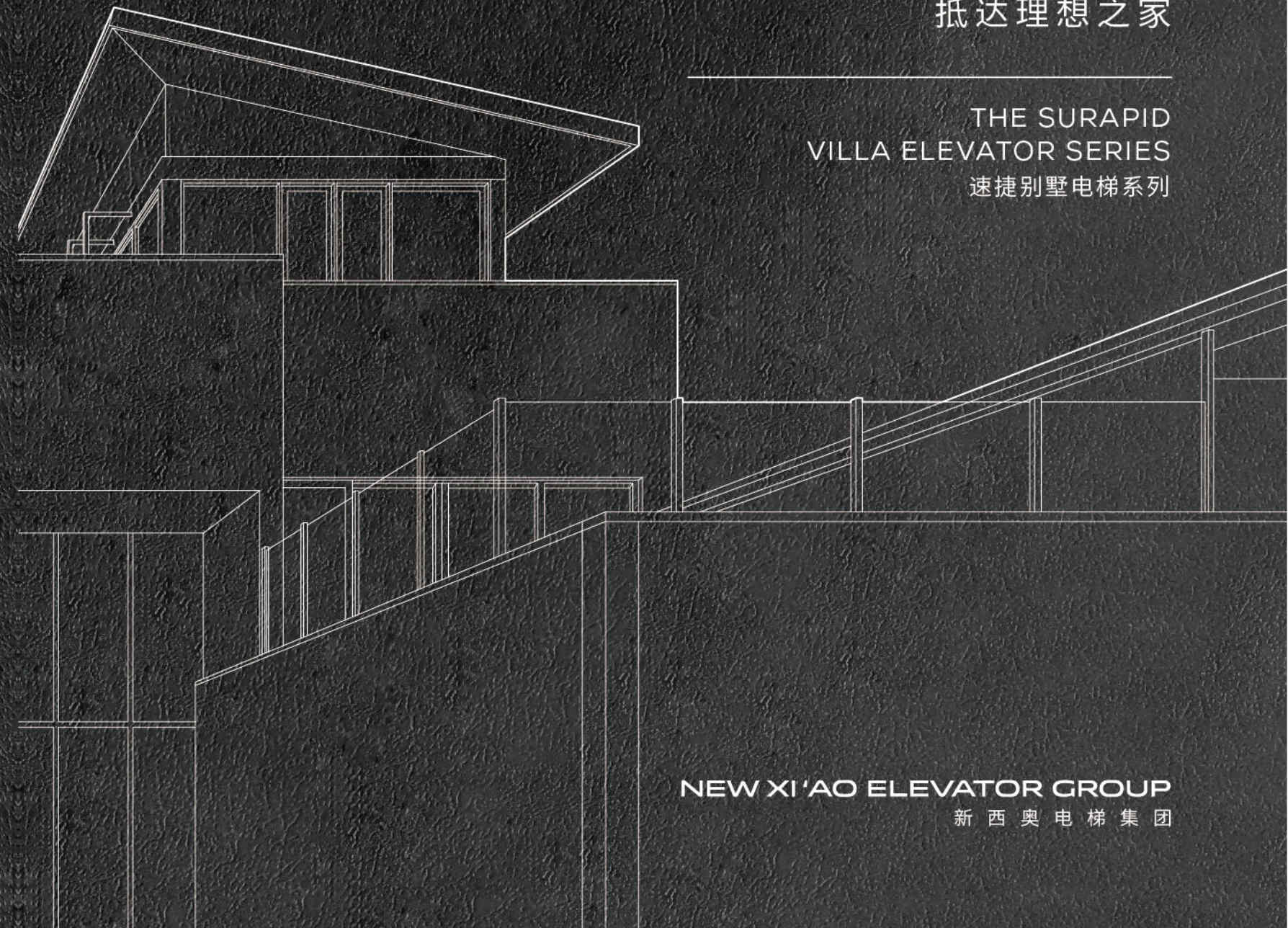


# SURAPID

## ARRIVING AT THE IDEAL HOME

抵达理想之家

THE SURAPID  
VILLA ELEVATOR SERIES  
速捷别墅电梯系列



China Top 10  
Elevator Companies  
中国电梯制造商10强



Made in  
Zhejiang  
浙江制造

Zhejiang SURAPID Elevator Co.,Ltd.  
浙江速捷电梯有限公司

[www.surapidelevator.com](http://www.surapidelevator.com)

This book is a general information publication, and we reserve the right to change the product technology and description at any time. Any words and sentences in this book, regardless of their literal meaning or meaning, are not responsible for the use and quality of any product, or the expression and modification of any purchase and sale contract. The appearance of the product is for reference only, the actual product shall prevail

本书为一般信息出版物，我们保留随时更改产品技术和说明的权利。本书中的任何词句，无论其字面意思或含义，对任何产品的用途和质量，或者任何购销合同条款的表述与更改均不承担责任。产品外观仅供参考，具体以实物为准

NEW XI'AO ELEVATOR GROUP  
新西奥电梯集团

ENJOY A MODERN HOME LIFESTYLE  
享受现代化居家生活方式

Experience the comfort and convenience of easy access within your home  
A stylish choice for modern living  
Bringing a quality life within reach

在家体验出入便捷的舒适  
现代家居的时尚选择  
让品质生活触手可及



## Pioneering Technology, Exquisite Aesthetics Crafting Villa Living for the Connoisseur of Life's Finer Arts

### 先锋科技 极致美学 成就别墅生活艺术家

#### SURAPID Villa Elevator

Creating a new experience in modern home accessibility.

We don't just manufacture elevators,  
we are dedicated to reflecting your unique understanding and taste for life through every detail.

速捷别墅电梯，  
打造现代家居通行新体验。  
我们不仅制造电梯，  
更致力于通过每一个细节，  
彰显您生活的独特理解和品味。

#### Custom designed for your space 为空间定制设计

Every villa deserves its own exclusive elevator.  
In the tranquility of your private space, experience a refined blend of quality and elegance, embracing peace and comfort.

每一所别墅，都值得拥有一部专属的电梯。  
在不被打扰的私人空间里，诠释品质与尊贵，享受宁静与舒适。

#### Crafting details for a better life 为生活打磨细节

SURAPID understands that a high-quality life lies in the details.  
By merging cutting-edge technology with artisanal craftsmanship, we provide comprehensive safety and redefine villa living.

速捷深知，高品质的生活重在细节。  
融合前沿科技与匠心工艺，全方位安全守护，重新定义别墅生活。

## CONTENTS

Product advantages and introduction 产品优势及介绍	03-10
JIE service “捷”服务	11-12
Decorative aesthetics 装潢美学	13-26
Steel Belt Villa Elevator SJ-S3100 钢带别墅梯SJ-S3100	27
Steel Wire Rope Villa Elevator SJ-S3110 钢丝绳别墅梯SJ-S3110	28
Sightseeing Villa Elevator SJ-S3100-G 观光别墅梯SJ-S3100-G	29-32
Platform Villa Elevator SJ-T1000MAX 平台别墅梯SJ-T1000MAX	33-36
Function configuration 功能配置	37-40
Civil engineering parameters 土建参数	41-52

# Inheriting Classics, Ceaselessly Innovating

## 承袭经典, 创新不止

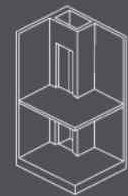
### Easy custom installation

#### 轻松定制安装

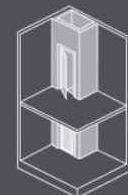
Ingeniously flexible structure  
Adapts to a variety of installation methods  
结构精巧灵活 适应多种安装方式

1. Building reserved hoistway

1. 建筑预留井道



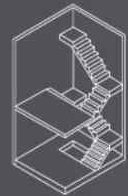
The building has a dedicated reserved hoistway  
建筑预留专用井道



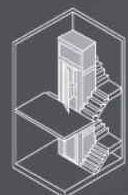
The villa elevator can be directly installed within the reserved hoistway  
别墅电梯可直接安装在预留井道内

2. Appropriate space near stairs

2. 靠近楼梯周围有适当的空间



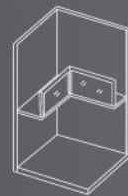
There is appropriate space near the stairs  
靠近楼梯周围有适当的空间



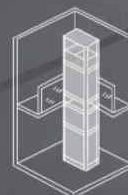
A villa elevator can be installed in a suitable location nearby  
可在周围适当位置安装别墅电梯

3. Hollow space in living room or bedroom

3. 客厅或房间中有中空位置



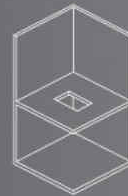
There is a hollow space in the living room or bedroom  
客厅或房间中有中空位置



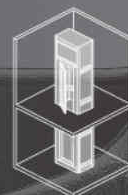
A hoistway can be added for the installation of a villa elevator  
可加装井道安装别墅电梯

4. Desire to install indoors but no suitable space

4. 想安装在室内却没有合适的位置



Wanting to install indoors but lacking appropriate space  
想要安装在室内, 却没有合适的空间



A hoistway can be added at a suitable floor location for the installation of a villa elevator  
在合适的楼板位置加装井道安装别墅电梯



### Enjoy comfort

#### 尊享舒适

Dual-car base structure to enhance shock absorption

Full set of solid guide rails for smooth operation

双轿底结构, 提高减震效果  
全套实心导轨, 运行平稳



### Safety innovation

#### 安全革新

Contactless controller solution, TÜV-certified SIL3 safety level

Reduces integrated ARD external wiring for enhanced safety and convenience

Standard one-touch emergency call for added peace of mind

控制柜无接触器方案, TÜV认证SIL3安全等级  
减少集成ARD外接线, 安全更便捷  
标配一键呼救, 更安心



### Elevated design

#### 设计升华

Ultra-thin iCtrl integrated control cabinet

Multiple door opening methods to choose from  
COP full glass panel enhances the sense of quality

超薄iCtrl一体化控制柜  
多种开门方式, 任意选择  
cop整体玻璃面板, 更显质感

## There is a Hollow Space in the Living Room or Bedroom. A Hoistway Can Be Added for the Installation of a Villa Elevator

### 优化设计, 科技升级 构筑未来乘梯体验

#### Standard configuration of absolute positioning

##### 全系标配绝对位置

- Replaces position switches in the hoistway for aesthetic improvement and easier installation.
- Integrated UCMP functionality ensures safety up to SIL3, enhancing overall elevator safety by tenfold compared to previous configurations.
- Fully secures the signal of the cabin's position, eliminating the need for elevator reset movements to reposition, effectively resolving issues caused by mechanical slippage. This greatly improves the elevator riding experience.
- 替代井道中的位置开关更美观, 并便于安装
- 集成UCMP功能, 安全性可以达到SIL3, 使整梯的安全性较原来提升10倍
- 完全实现轿厢位置信号不丢失, 杜绝电梯的复位运行重新定位位置, 对机械打滑带来的位置丢失迎刃而解, 乘梯体验得到明显提升

#### New generation control cabinet

##### 新一代控制柜

- Stable: With stringent tests in electronics, mechanics, environmental factors, and EMC, this product maintains a low failure rate under 0.3%.
- Safe: Integrates ARD and braking resistors for a deeply integrated solution to emergency rescue needs during power failures, enhancing safety significantly.
- Quiet: Equipped with standard STO, a contactor-less STO/SBC solution, ensuring noise levels are below 45dB.
- Aesthetically Pleasing: Features a finer surface treatment process that improves corrosion resistance, enhancing both the aesthetic and environmental appeal. The cabinet has a sleek thickness of only 60mm.
- 稳定: 通过严格的电子、机械、环境及EMC测试, 产品故障率低于0.3%
- 安全: 集成ARD、制动电阻, 深度集成解决停电应急救人需求更安全
- 安静: 标配STO, 无接触器方案STO/SBC, 噪音<45db
- 美观: 更细腻的表面处理工艺耐腐蚀性更强, 更美观环保, 柜体厚度仅有60mm



## All-round Safety Protection Safeguarding Every Day with Care

### 全方位安全防护 贴心守护每一天

#### One-click emergency call, prepared for any situation (standard)

By using the call button on the control panel, users can initiate a call to the control cabinet's intercom master station. If there is no response, the intercom system will automatically dial up to three pre-set phone numbers in sequence until the call is successfully connected.

#### 一键呼救, 有备无患 (标配)

通过操纵箱上通话按钮, 可以对控制柜对讲主机进行呼叫, 当无应答时, 对讲主机将自动向依次设置好的3组电话号码(或手机)进行拨号, 直至成功接通。



#### Power outages no worry, hoistway-prepared for emergencies (standard)

When the elevator stops suddenly due to a power outage while it is operating normally, the emergency device will quickly activate, driving the elevator at a low speed to the nearest level floor. After leveling, it will emit a notification to inform passengers that it is safe to exit.

#### 停电不慌, 应急有方 (标配)

当电梯正常运行中突然断电急停时, 应急装置会迅速动作, 驱动电梯低速运行至平层位置, 平层后, 发出提示信息, 提醒乘客安全离开。



#### Intelligent child lock, guarding with love (optional)

After activating the child lock feature by pressing and holding, the child lock indicator light on the elevator call button will illuminate, preventing the elevator from starting unintentionally. This prevents accidental operation by children, ensuring their safety.

#### 智能童锁, 为爱守护 (选配)

孩子的安全, 便捷时刻放在心上。长按开启童锁功能后, 下方呼梯按键上的童锁提示灯起, 电梯无法直接启动, 防止孩子误操作电梯, 确保他们的安全。



#### Remote monitoring, real-time protection (optional)

SURAPID integrates advanced technologies such as the IOT, GIS, video surveillance, 3G/4G communication, cloud computing, and big data analytics into a single smart interconnected platform. This platform encompasses elevator positioning, emergency response capabilities, call center support, and IoT cloud system analysis with intelligent maintenance features, ensuring real-time elevator safety and effectiveness.

#### 远程监测, 实时守护 (选配)

便捷借助物联网、GIS、视频监控、3G/4G通讯传输、云计算、大数据技术搭建智慧互联平台, 集成电梯定位、电梯应急处置、呼叫中心、物联网云计算系统分析、电梯智能维保功能于一身, 实时守护电梯安全。



# Empowering Smart Home Living Advanced Technology at Your Command

## 赋能家居生活 智能科技尽在掌控

As the smart home era emerges, SURAPID has established a full-spectrum intelligent safety ecosystem. By integrating smart technology into villa elevators, SURAPID seamlessly blends cutting-edge innovations with home living, allowing you to truly experience the convenience, safety, and comfort that advanced technology can provide.

随着智慧家居时代的到来，速捷搭建了全方位的智能安全生态体系，将智能科技融入别墅电梯，将前沿技术与家居生活完美融合，让您真正感受到科技带来的便捷、安全和舒适。

## Intelligent elevator calling 智能呼梯

SURAPID elevators feature an interior QR code controller, offering multiple touchless options to call the elevator. By operating the elevator call through your smartphone, the destination floor button will automatically illuminate, eliminating the need for physical contact with the elevator throughout the process.

速捷电梯借助设置于轿内二维码控制器，提供无接触呼叫电梯的多种方案。通过手机操作呼叫电梯，电梯按钮即自动点亮目的地楼层，全程无需接触电梯。

- Transitioning from "people waiting for the elevator" to "elevator waiting for the people"
- Seamless entry and exit, saving time and enhancing convenience
- From "people waiting for the elevator" to "elevator waiting for the people"
- Entry without waiting, saving time and convenience
- Comprehensive cloud-based elevator calling solutions
- Smartphone calling / QR code calling / NFC calling
- Multi-directional cloud calling solutions
- Mobile phone calling / QR code calling / NFC calling
- Voice recognition and other contactless calling methods
- Voice recognition and other contactless calling methods



## Smart maintenance 智能维保

SURAPID adopts a new smart-optimized maintenance model, seamlessly integrating cloud platform and IoT technologies to swiftly detect equipment issues, customize personalized maintenance plans, and promptly dispatch personnel to resolve on-site faults.

速捷采用智能优化维保新模式，智慧结合云平台与物联网技术，在第一时间发现设备问题，定制个性化维保方案，迅速及时完成派工调度，解除现场故障。

- 24h comprehensive equipment monitoring
- Automatic reporting of critical malfunctions
- 24-hour equipment full-process monitoring
- Key fault automatic reporting



## JIE service

### “捷”服务



## 24h service hotline, quick response to your inquiries

SURAPID has branch offices and a comprehensive service network across the country. Choosing SURAPID products means selecting the best after-sales service. Wherever SURAPID elevators are installed, our repair and maintenance services are readily available nearby.

## Mission accomplished in a timely manner

Excellence stems from professionalism. Our nationwide maintenance technicians have undergone rigorous training and possess specialized skills, ensuring they can provide the most comprehensive and high-quality service to you in the shortest time.

## 24小时服务热线快速响应您的垂询

训练有素的客户关怀代表将全天候接听您的来电。他们了解您的设备与情况，并通过全国联网的身份识别码系统为您提供精准的服务。365天24小时服务热线400-811-0456快速响应您的垂询。

## 第一时间 使命必达

卓越源于专业，遍布全国的维保技师都经过严格培训，拥有专业技能，确保第一时间为您提  
供最全面、最优质的服务。

## Meticulous maintenance, lifetime assurance

We have customized standardized maintenance service packages for your elevator and escalator equipment. With our dedicated care and maintenance, the service life of your products will be significantly extended, and we can provide additional value-added services to safeguard your equipment.

## Parts supply, always ready

Our three-tier nationwide parts storage and extensive logistics network can provide ample spare parts in close proximity to ensure lifelong product support, giving you peace of mind.

## 精细养护 终身无忧

我们为电梯、扶梯设备量身定制了标准化的保养作业单位，在我们的精心维护保养下，您的产品运行寿命将大大延长，同时可提供更多的增值服务，为您的设备保驾护航。

## 备件供应 随时待命

覆盖全国的三级备件存储、辐射广泛的物流供应网络可就近为产品终生提供充裕的备件，让您永无后顾之忧。



## Meticulous service, we're here for you

In modern living, elevators provide comfortable transportation services for people every day. To ensure safe and reliable elevator operations, SURAPID strives for excellence in every aspect, from design to maintenance, to deliver the finest products and services for our customers. From site construction to the entire product lifecycle, SURAPID offers the most dependable and attentive personalized service.

## 精细服务 我们在您身边

现代生活，电梯每天为人们提供舒适的运载服务。为确保电梯安全运行，速捷电梯精益求精于每台设备从设计到保养的每个环节，力求为客户提供尽善尽美的产品与服务。从客户的土建，到产品的终身使用年限，速捷电梯全程提供最可靠、最贴心的精细化服务。



## Remote monitoring is professional and reliable

SURAPID's remote monitoring service utilizes wireless technology to enable real-time data transmission between the elevator/escalator equipment and monitoring centers. Through 24/7 surveillance of critical operating parameters, we can instantly detect equipment malfunctions and promptly dispatch personnel to resolve on-site issues.

## 远程监控 专业可靠

速捷电梯远程监控服务，通过远程无线技术实现电梯、自动扶梯设备与各监控服务中心的信息数据传输。全天24小时实时监控设备运行的重要参数，监测设备的实时运行状况，能在第一时间发现设备故障，并迅速及时完成派工调度，解除现场故障。



## Service precedes sales

SURAPID has branch offices and a comprehensive service network across the country. Choosing SURAPID products means selecting the best after-sales service. Wherever SURAPID elevators are installed, our repair and maintenance services are readily available nearby.

## 销售未动 服务先行

速捷电梯拥有遍布全国的分支机构，以及依此建立的完善的服务网络。选择了速捷电梯的产品，就意味着选择了最佳的售后服务。哪里有速捷电梯的产品，哪里就有我们的维修服务点，服务近在咫尺。



# Aesthetic Cabin Design

## 装潢美学



### XTQ02-21-1

Standard cabin 标配轿厢

#### Ceiling

XTQ04-506D Short-hairline-finish stainless steel+downlight

#### Car wall

Short-hairline-finish stainless steel

#### Floor

XTQ07-31; PVC

#### 吊顶

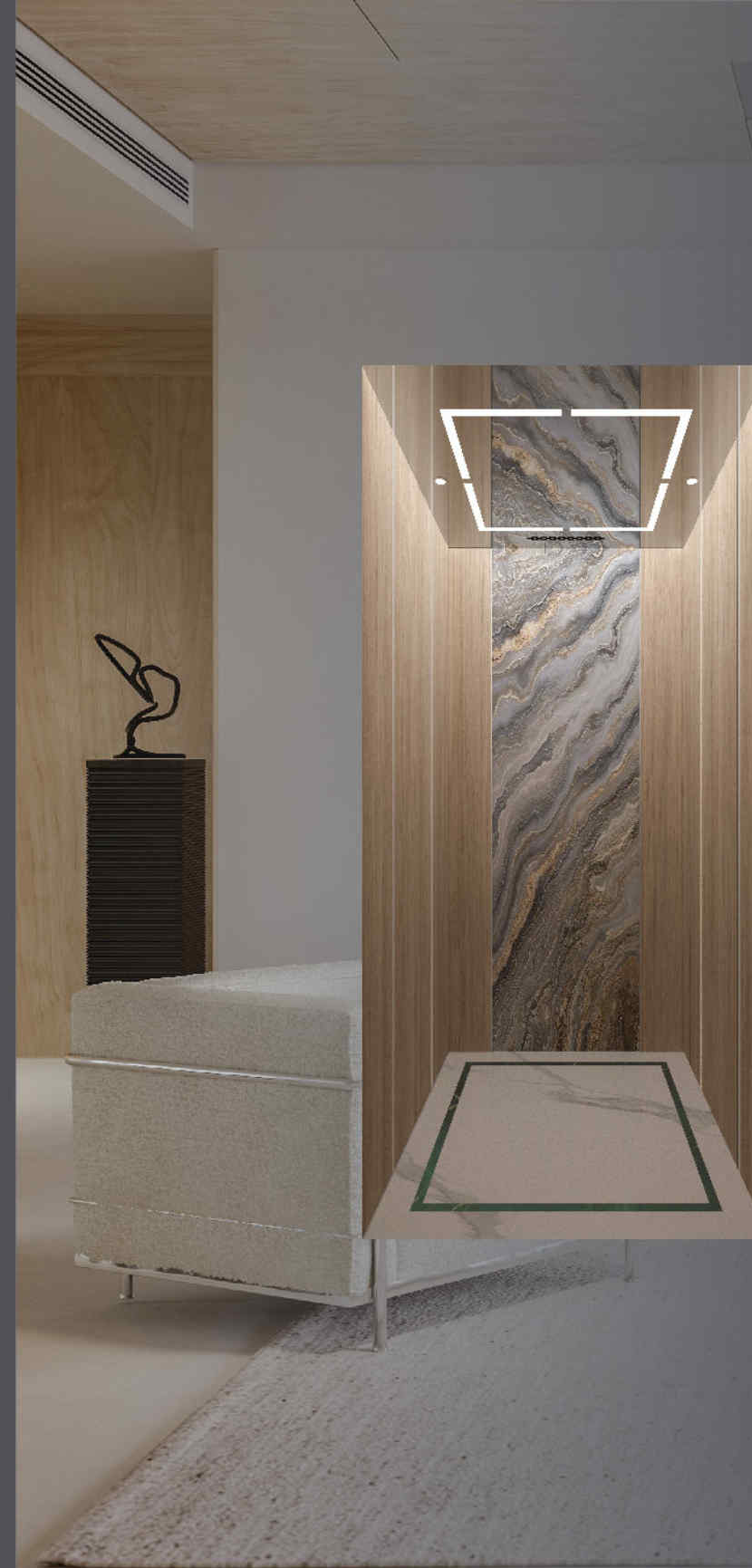
XTQ04-506D  
短丝发纹不锈钢+LED筒灯

#### 轿壁

短丝发纹不锈钢

#### 地板

XTQ07-31; PVC



### XTQ02-2405

Optional cabin 选配轿厢

#### Integrated ceiling

Mirror stainless steel wall panels+Acrylic transparent board+LED light strips+2 spotlights

#### Floor

Printing PVC (Yashi White+Big Flower Green)

#### Side wall

Cosmetic steel plate(HSM028 Straight grain oak)+Aluminum profile strip(Shallow coffee)

#### Front wall

Cosmetic steel plate(HSM028 Straight grain oak)

#### Back wall

Cosmetic steel plate(HSY006 Lijinyu Rock)+cosmetic steel plate(HSM028 Straight grain oak)+Aluminum profile strip(Shallow coffee)

#### Recommended car door

Cosmetic steel plate(HSM028 Straight grain oak)

#### 一体顶

镜面不锈钢贴面+透光亚克力+LED灯带+2个射灯

#### 地坪

打印PVC(雅士白+大花绿)

#### 侧壁

彩妆钢板(HSM028直纹橡木)+铝型材嵌条(浅咖)

#### 前壁门楣

彩妆钢板(HSM028直纹橡木)

#### 后壁

彩妆钢板(HSY006鎏金玉岩)+彩妆钢板(HSM028直纹橡木)+铝型材嵌条(浅咖)

#### 推荐轿门

彩妆钢板(HSM028直纹橡木)

# Aesthetic Cabin Design

## 装潢美学



### XTQ02-2404

Optional cabin 选配轿厢

#### Ceiling

Top layer powder coated steel plate (crescent white, fine wrinkles)+powder coated steel plate (crescent white, fine wrinkles)+hairline stainless steel plated champagne gold frame+4 spotlights+hidden light strips

#### Floor

Printing PVC (Yashi White+nero margiua)

#### Side wall

Cosmetic steel plate(MS1)

#### Front wall

Cosmetic steel plate(MS1)

#### Back wall

cosmetic steel plate(MS1)+Hidden light strip+mirror stainless steel

#### Recommended car door

Cosmetic steel plate(MS1)

#### 吊顶

上层顶喷粉钢板(月牙白,细皱)+喷粉钢板(月牙白,细皱)+发纹不锈钢镀香槟金框架+4个射灯+暗藏灯带

#### 地坪

打印PVC(雅士白+黑白根)

#### 侧壁

彩妆钢板(MS1)

#### 前壁门楣

彩妆钢板(MS1)

#### 后壁

彩妆钢板(MS1)+暗藏灯带+镜面不锈钢

#### 推荐轿门

彩妆钢板(MS1)



Scan the QR code for a 360-degree view of the elevator car interior  
扫描二维码360°查看轿厢



### XTQ02-2406

Optional cabin 选配轿厢

#### Integrated ceiling

Mirror stainless steel wall panels+Acrylic transparent board+LED light strips+2 spotlights

#### Floor

Printing PVC (Yashi White+Big Flower Green)

#### Side wall

Cosmetic steel plate(HSM015 Technology Brown Beech Wood)+Mirror stainless steel

#### Front wall

Cosmetic steel plate(HSM015 Technology Brown Beech Wood)

#### Back wall

Cosmetic steel plate(HSM015 Technology Brown Beech Wood)+Mirror stainless steel+Aluminum profile strip(light gray)

#### Recommended car door

Cosmetic steel plate(HSM015 Technology Brown Beech Wood)

#### 一体顶

镜面不锈钢贴面+透光亚克力+LED灯带 +2个射灯

#### 地坪

打印PVC(雅士白+大花绿)

#### 侧壁

彩妆钢板(HSM015科技棕桦木)+镜面不锈钢

#### 前壁门楣

彩妆钢板(HSM015科技棕桦木)

#### 后壁

彩妆钢板(HSM015科技棕桦木)+镜面不锈钢+铝型材嵌条(深灰)

#### 推荐轿门

彩妆钢板(HSM015科技棕桦木)



Scan the QR code for a 360-degree view of the elevator car interior  
扫描二维码360°查看轿厢

# Aesthetic Cabin Design

## 装潢美学



### XTQ02-2301

Optional cabin 选配轿厢

#### Integrated ceiling

Middle powder coated steel plate+stainless steel frame with hairline on both sides+hidden light strip (4000k)

#### Floor

Printing PVC (Yashi White+Italian Grey+Pure Black)

#### Side wall

Powder coated steel plate (RAL9010)+hairline stainless steel

#### Front wall

Powder coated steel plate (RAL9010)

#### Back wall

Powder coated steel plate (RAL9010)+hairline stainless steel

#### Recommended car door

Powder coated steel plate (RAL9010)

#### 轿厢一体顶

中间喷粉钢板+两边发纹不锈钢框架+暗藏灯带 (4000k)

#### 地坪

打印PVC (雅士白+意大利灰+纯黑)

#### 侧壁

喷粉钢板 (RAL9010) +发纹不锈钢

#### 前壁门楣

喷粉钢板 (RAL9010)

#### 后壁

喷粉钢板 (RAL9010) +发纹不锈钢

#### 推荐轿门

喷粉钢板 (RAL9010)



Scan the QR code for a 360-degree view of the elevator car interior  
扫描二维码360°查看轿厢



### XTQ02-2313-2

Optional cabin 选配轿厢

#### Ceiling

Aluminum alloy frame (black)+transparent soft film

#### Floor

Printing PVC (Yashi White+Italian Grey)

#### Side wall

Basic galvanized sheet car wall+aluminum veneer (0307 matte coffee)

#### Front wall

Hairline stainless steel

#### Back wall

Basic galvanized sheet car wall+aluminum veneer (0307 matte coffee)+Two tone aluminum plate (L-6077 coffee ginkgo)

#### Recommended car door

Hairline stainless steel

#### 吊顶

铝合金框架 (黑色) +透光软膜

#### 地坪

打印PVC (雅士白+意大利灰)

#### 侧壁

基础镀锌板轿壁+铝单板 (0307雾面咖啡)

#### 前壁门楣

发纹不锈钢

#### 后壁

基础镀锌板轿壁+铝单板 (0307雾面咖啡)+双色铝板 (L-6077咖啡银杏)

#### 推荐轿门

发纹不锈钢



Scan the QR code for a 360-degree view of the elevator car interior  
扫描二维码360°查看轿厢

# Aesthetic Cabin Design

装潢美学



## XTQ02-2303

Optional cabin 选配轿厢

### Ceiling

Powder coated steel plate(crescent white RAL9001)+hidden light strip (4000k)

### Floor

Printing PVC (Yashi White+Pure Black)

### Side wall

Powder coated steel plate(crescent white RAL9001)+hairline stainless steel plated with rose gold

### Front wall

Powder coated steel plate(crescent white RAL9001)

### Back wall

Powder coated steel plate(crescent white RAL9001)+hairline stainless steel plated with rose gold+LED hidden light strip

### Recommended car door

Powder coated steel plate(crescent white RAL9001)

### 吊顶

喷粉钢板(月牙白RAL9001)+暗藏灯带(4000k)

### 地坪

打印PVC(雅士白+纯黑)

### 侧壁

喷粉钢板(月牙白RAL9001)+发纹不锈钢镀玫瑰金

### 前壁门楣

喷粉钢板(月牙白RAL9001)

### 后壁

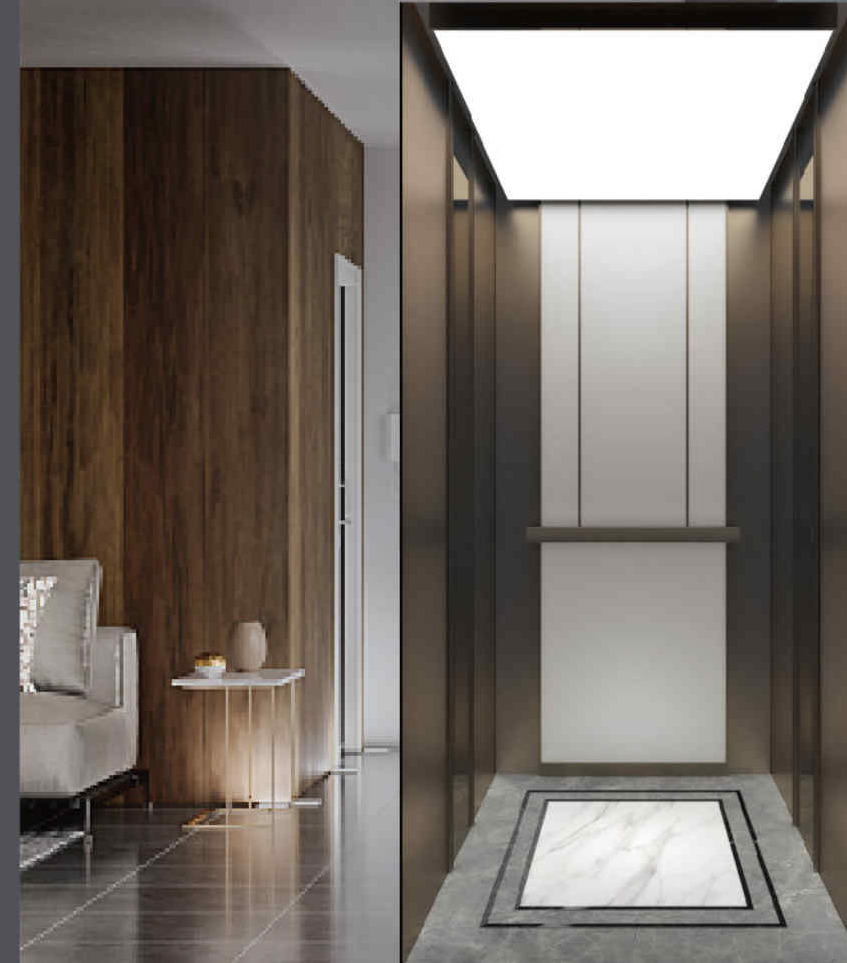
喷粉钢板(月牙白RAL9001)+发纹不锈钢镀玫瑰金+LED暗藏灯带

### 推荐轿门

喷粉钢板(月牙白RAL9001)



Scan the QR code for a 360-degree view of the elevator car interior  
扫描二维码360°查看轿厢



## XTQ02-2304

Optional cabin 选配轿厢

### Ceiling

Surface light source ceiling

### Floor

Printing PVC (Yashi White+Italian Grey+Pure Black)

### Side wall

Stainless steel antique copper plated concave strip+hairline stainless steel antique copper plated+mirror stainless steel antique copper plated

### Front wall

Hairline stainless steel antique copper plated

### Back wall

Hairline stainless steel antique copper decorative strip+Hairline stainless steel antique copper plating+baked paint panel

### Recommended car door

Hairline stainless steel antique copper plated

### 吊顶

面光源吊顶

### 地坪

打印PVC(雅士白+意大利灰+纯黑)

### 侧壁

不锈钢镀古铜凹型嵌条+发纹不锈钢镀古铜+镜面不锈钢镀古铜

### 前壁门楣

发纹不锈钢镀古铜

### 后壁

发纹不锈钢镀古铜装饰条+发纹不锈钢镀古铜+烤漆面板

### 推荐轿门

发纹不锈钢镀古铜



Scan the QR code for a 360-degree view of the elevator car interior  
扫描二维码360°查看轿厢

Aesthetic Cabin Design  
装潢美学



**XTQ02-2318**

Optional cabin 选配轿厢

**Integrated ceiling**

Powder coated steel plate(RAL9016)+downlight+aluminum alloy light strip

**Floor**

PVC

**Side wall**

Powder coated steel plate(RAL7004)+mirror stainless steel coated with titanium black

**Front wall**

Mirror stainless steel coated with titanium black

**Back wall**

Powder coated steel plate(RAL9016)+powder coated steel plate(RAL7004)+aluminum alloy light strip

**Recommended car door**

Mirror stainless steel coated with titanium black

**一体顶**

喷粉钢板 (RAL9016) +筒灯+铝合金灯条

**地坪**

PVC

**侧壁**

喷粉钢板 (RAL7004) +镜面不锈钢镀钛黑

**前壁门楣**

镜面不锈钢镀钛黑

**后壁**

喷粉钢板 (RAL9016) +喷粉钢板 (RAL7004) +铝合金灯条

**推荐轿门**

镜面不锈钢镀钛黑



Scan the QR code for a 360-degree view of the elevator car interior  
扫描二维码360°查看轿厢



**XTQ02-2319**

Optional cabin 选配轿厢

**Ceiling**

Mirror stainless steel frame+acrylic transparent board+downlight

**Floor**

PVC

**Side wall**

Mirror stainless steel etched with champagne gold+hairline stainless steel+aluminum profile strip (dark gray)

**Front wall**

Hairline stainless steel

**Back wall**

Mirror stainless steel etched with champagne gold+hairline stainless steel+aluminum profile strip (dark gray)

**Recommended car door**

Hairline stainless steel

**吊顶**

镜面不锈钢框架+亚克力透光板+筒灯

**地坪**

PVC

**侧壁**

镜面不锈钢蚀刻镀香槟金+发纹不锈钢+铝型材嵌条 (深灰)

**前壁门楣**

发纹不锈钢

**后壁**

镜面不锈钢蚀刻镀香槟金+发纹不锈钢+铝型材嵌条 (深灰)

**推荐轿门**

发纹不锈钢



Scan the QR code for a 360-degree view of the elevator car interior  
扫描二维码360°查看轿厢

# Aesthetic Cabin Design

装潢美学



Scan the QR code for a 360-degree view of the elevator car interior  
扫描二维码360°查看轿厢

## XTQ02-2310

Optional cabin 选配轿厢

### Ceiling

Hairline stainless steel bronze plated frame+mirror stainless steel bronze plated+down-light+hidden light strip

### Floor

Marble (Yugoslavian white)

### Side wall

Leather pattern hard pack (XH161-01)+hairline stainless steel plated bronze inlay strip

### Front wall

Hairline stainless steel coated with bronze

### Back wall

Hairline stainless steel plated bronze decorative strip+leather pattern hard package (XH161-01)+hidden light strip

### Recommended car door

Hairline stainless steel coated with bronze

### 吊顶

发纹不锈钢镀青铜框架+镜面不锈钢镀青铜+筒灯+暗藏灯带

### 地坪

大理石(南斯拉夫白)

### 侧壁

皮纹硬包 (XH161-01)+发纹不锈钢镀青铜嵌条

### 前壁门楣

发纹不锈钢镀青铜

### 后壁

发纹不锈钢镀青铜装饰条+皮纹硬包 (XH161-01)+暗藏灯带

### 推荐轿门

发纹不锈钢镀青铜



Scan the QR code for a 360-degree view of the elevator car interior  
扫描二维码360°查看轿厢

## XTQ02-2320

Optional cabin 选配轿厢

### Ceiling

Hairline stainless steel plated with antique copper frame+powder coated steel plate (RAL90001)+LED spotlights+hidden light strip

### Floor

Rock slab (new mine Yundora ash)

### Side wall

Meiyijia makeup steel plate+hairline stainless steel plated with ancient copper decorative strip

### Front wall

Hairline stainless steel plated with antique copper

### Back wall

Meiyijia makeup steel plate+Meiyijia color printing steel plate+hairline stainless steel plated bronze decorative strip+hidden light strip

### Recommended car door

Hairline stainless steel plated with antique copper

### 吊顶

上层顶喷粉钢板 (RAL9001) +发纹不锈钢镀青铜框架+喷粉钢板 (RAL9001) +LED射灯+暗藏灯带

### 地坪

岩板(新矿云多拉灰)

### 侧壁

美艺佳彩妆钢板+发纹不锈钢镀青铜饰条

### 前壁门楣

发纹不锈钢镀青铜

### 后壁

美艺佳彩妆钢板+美艺佳彩印钢板+发纹不锈钢镀青铜饰条+暗藏灯带

### 推荐轿门

发纹不锈钢镀青铜

# Human-Machine Interface 人机界面

## Operation panel 操纵箱



**XCP26-AS**  
S3100 Standard operation panel  
S3100标配操纵箱



**XCP26-AS (white白)**  
S3100 Standard operation panel  
S3100标配操纵箱



**XCP33-A**  
Optional operation panel for the all series  
全系列选配操纵箱



**XCP33-B**  
T1000-MAX Standard operation panel  
Any series can be chosen  
T1000-MAX 标配操纵箱 全系列可选



**XCP15-B**  
S3100 Standard operation panel  
S3110标配操纵箱



**XCP15-B (white白)**  
S3100 Standard operation panel  
S3110标配操纵箱



**XCP26-AS**  
S3100-G Standard operation panel  
S3100-G标配操纵箱



**XCP26-AS (white白)**  
S3100-G Standard operation panel  
S3100-G标配操纵箱

## Calling board 外呼



**XHB15-mini**  
Standard calling board  
标配外呼



**XHB15-mini (white白)**  
Standard calling board  
标配外呼



**XHB33-A**  
Touch calling board with bottom box  
Optional for the all series  
触摸有底盒召唤盒 全系列选配



**XHB31-BS**  
Calling board without bottom box  
Optional for the all series  
无底盒召唤盒 全系列选配

# Decoration Configuration 装潢配置

## Landing door(Optional) 厅门(选配)



**XTA09-205-1**  
Hairline stainless steel rose gold etching  
发纹不锈钢玫瑰金蚀刻



**XTQ09-211**  
Mirror stainless steel etching  
镜面不锈钢蚀刻



**XTQ09-156**  
Mirror stainless steel etching  
镜面蚀刻



**XTQ09-212**  
Hairline stainless steel plated with rose gold  
发纹镀玫瑰金

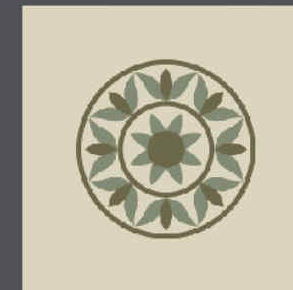


**XTQ09-14**  
Long hairline stainless steel plated with black titanium  
长发纹镀黑钛

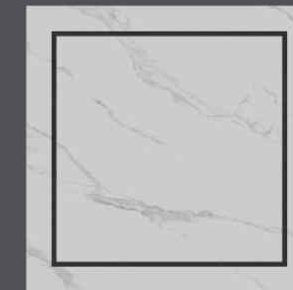
## Floor 地坪



**XTQ07-31**  
PVC parquet  
PVC拼花



**XTQ07-B1304**  
PVC  
PVC



**XTQ07-B2303**  
PVC  
PVC



**XTQ07-249**  
PVC  
PVC

# SJ-S3100

New Generation Steel Belt Villa Elevator  
Inheriting Classics, Ceaselessly Innovating

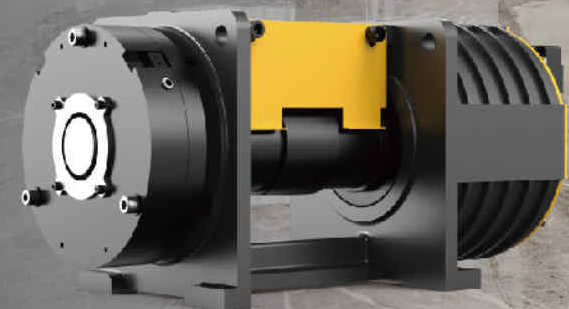
新一代钢带别墅电梯  
承袭经典, 创新不止

The new SJ-S3100 steel belt home elevator embraces the latest flat composite steel belt technology, which is lighter, more flexible, and more durable, significantly saving architectural space and reducing construction costs. At the same time, it incorporates the latest elevator control technologies, achieving a comprehensive tripartite upgrade in integration, appearance, and enhanced features.

速捷新一代SJ-S3100钢带家用电梯, 采用最新的扁平复合钢带技术, 更轻巧、更柔韧、更耐用, 可以极大地节省建筑空间, 降低建造成本。同时引入最新的电梯控制技术, 在集成、外观和增配上进行了三位一体式的全面升级。

## Optimized steel belt traction structure 优选钢带曳引结构

- The adoption of a highly efficient and energy-saving steel belt traction machine greatly reduces power consumption in standby mode and also reduces the structural demands for hoistway support.
- Using a steel core wrapped in polymeric polyurethane enhances flexibility and reduces wear, extending the lifespan to 2-3 times that of traditional steel cables.
- The steel belt uses a flat design, which provides a larger contact surface compared to steel cables, resulting in more even distribution of force, less vibration, and smoother operation.
- No additional lubrication is required, resulting in no oil stain pollution, making it more environmentally friendly.
- 采用高效节能的钢带曳引机, 待机功耗大大降低, 同时降低井道支撑要求
- 采用高分子聚氨酯包裹钢芯, 增加柔韧、减少磨损, 寿命是传统钢丝绳的2-3倍
- 钢带采用扁平设计接触面相较钢丝绳更大, 受力均匀, 震动幅度更小, 运行更平稳
- 无需额外润滑无油污污染, 更环保



# SJ-S3110

Newly Upgraded Steel Cable Villa Elevator  
Continuing the Essence, Breaking Boundaries

新升级钢丝绳别墅梯  
延续精华, 突破界限

The SURAPID SJ-S3110 series combines a high-efficiency permanent magnet motor with a new type of traction steel cable to reduce noise and enhance riding comfort, providing energy efficiency and safety. Its miniaturization and lightweight design are suitable for the smallest hoistway sizes, while also achieving optimal results in terms of top-floor height, pit depth, and hoistway utilization.

速捷SJ-S3110系列采用高效永磁电机与新型曳引钢丝绳相结合, 降低噪音、提升乘坐舒适性, 节能安全; 小型化和轻量化可以适应最小井道, 同时顶层高度、底坑深度和井道利用率均达到最佳效果。



# SJ-S3100-G

Panoramic View, Everything in Sight  
Unlocking a Life of Exquisite Villa Living

全景视野, 尽收眼底  
开启精致别墅家居生活

The SURAPID SJ-S3100-G series targets villa elevator users, meeting standard villa floor height requirements efficiently. It offers a standard top-floor height of 3 meters, with a minimum top-floor requirement of just 2900mm, and a standard pit depth of 270mm, going down to a minimum of just 0.2m. This design fulfills the typical height needs of conventional villas, with the elevator hoistway barely protruding above the top floor, thereby significantly reducing construction costs. The series combines a more compact control cabinet and a more user-friendly human-machine interface, offering a high cost-performance ratio.

速捷SJ-S3100-G系列瞄准别墅电梯用户需求, 标准顶层高度为3m, 最小顶层高度需求仅2900mm、标准底坑深度270mm, 最小底坑深度仅0.2m, 充分满足常规别墅层高需求, 电梯井道几乎不突出顶层, 大大降低土建成本。集更小型化的控制柜、更人性化的人机界面于一身, 性价比极高。

Optimal space utilization  
极致空间利用率

Minimum top floor height of 2900mm;  
minimum pit depth of just 270mm.

最小顶层高度2900mm; 最小底坑深度仅270mm



Boundless view, full marks for aesthetics  
无边视野, 满分颜值

Transparent tempered glass; dazzling aluminum alloy frame

通透的钢化玻璃; 炫彩铝合金框架



# Car Decoration 轿厢装潢



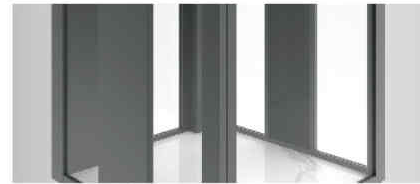
## XTQ08-B2313

<b>Ceiling</b> Integrated large light source(XTQ04-BG2313A)	<b>吊顶</b> 一体式大光源 (XTQ04-BG2313A)
<b>Front wall</b> Powder coated steel plate(color consistent with the aluminum alloy frame)	<b>前壁</b> 喷粉钢板 (颜色与铝合金框架颜色一致)
<b>Side wall</b> Tempered glass (transparent)+aluminum alloy frame; black glass	<b>侧壁</b> 钢化玻璃 (透明)+铝合金边框;黑色玻璃
<b>Back wall</b> Tempered glass (transparent)+aluminum alloy frame	<b>后壁</b> 钢化玻璃 (透明)+铝合金边框
<b>Floor</b> Marble (Jazz White XTQ07-BG2312A)	<b>地坪</b> 大理石 (爵士白 XTQ07-BG2312A)

### Optional car and aluminum alloy frame 可选轿厢及铝合金框架



**Champagne gold**  
香槟金 (RAL1035) XTQ08-B2313A



**Daiya black**  
黛雅黑 (RAL9005) XTQ08-B2313B

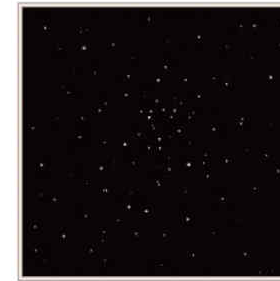


**Dawn moon white**  
皓月白 (RAL9010) XTQ08-B2313C

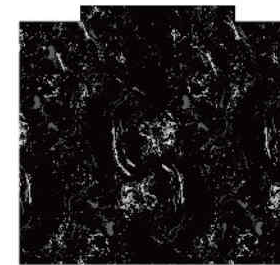


**Deep fog gray**  
深雾灰 XTQ08-B2313D

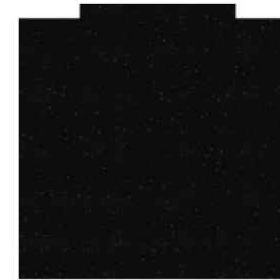
### Optional starry sky ceiling 可选星空顶



### Optional floor 可选地板



**Black and white**  
黑白花

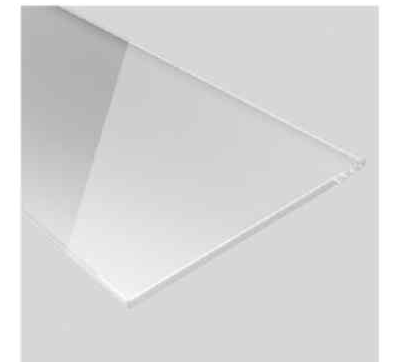


**Black Sands**  
黑金沙

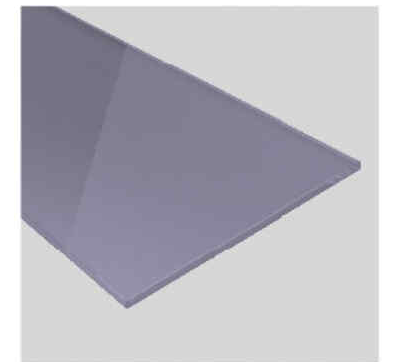


### Optional glass 可选玻璃

可选玻璃



**Transparent glass**  
透明玻璃



**Blue star grey glass**  
蓝星灰玻璃

# SJ-T1000 MAX

Smooth and Gentle Start and Stop  
Making the Lifting More Artistic

启停平缓柔顺  
让升降更艺术

The SJ-T1000 MAX series residential lift platform is based on a thorough understanding of user needs, combining the advantages of platform lifts with the strengths of steel belt elevators. It employs the industry's mainstream traction drive method, resulting in a more rational mechanical structure and spatial arrangement. The platform features excellent characteristics such as high efficiency, energy conservation, environmental friendliness, and superior space utilization.

SJ-T1000 MAX系列升降平台家用梯, 基于对用户需求的充分理解, 继承了平台梯的优点, 又吸收容纳了钢带电梯的长处, 采取业内最主流的曳引驱动方式, 力学结构和空间布置更合理, 具有高效节能、环保、空间利用率高等卓越特性。

**Sensitive and convenient,  
operates smoothly and comfortably**  
灵敏便捷、运行平稳舒适

A comfortable speed operation curve, smooth and gentle start and stop.

舒适的速度运行曲线, 启停平缓柔顺。



**Perfectly silent**  
完美静音

Uses silent steel belt traction technology, ensuring it does not disturb the rest of the family.

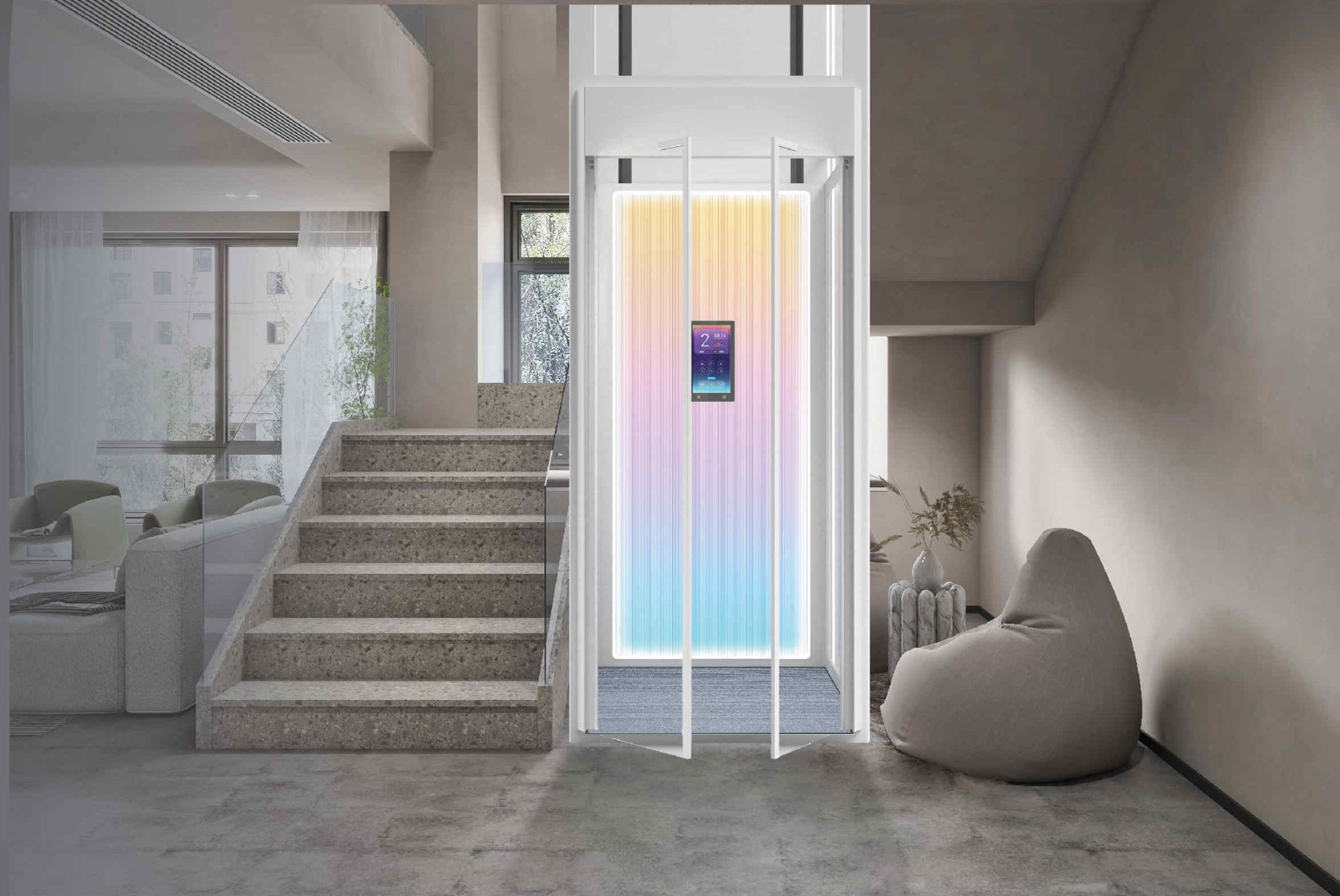
采用静音钢带曳引技术, 绝不影响家人休息。



**Optimized space utilization**  
优化空间利用

Optimizes the elevator hoistway layout to enhance space utilization.

优化电梯井道布置方式, 提高空间利用率。



## Car Decoration

### 轿厢装潢



**Platform elevator car (three sides)**  
平台轿厢(三侧)

**Back wall:** powder coated steel plate frame+translucent gradient acrylic board+hidden light strip  
**Side wall:** powder coated steel plate frame+laminated glass  
**Floor:** Blue gray carpet  
 后壁:喷粉钢板框架+透光渐变亚克力板+暗藏灯带  
 侧壁:喷粉钢板框架+夹胶玻璃  
 地板:蓝灰色地毯

### Standard car 标配轿厢

Colour	颜色	Car model 轿厢型号
Champagne gold	香槟金 (RAL1035)	XTQ08-B2401A
Daiya blac	黛雅黑 (RAL9005)	XTQ08-B2401B
Dawn Moon White	皓月白 (RAL9010)	XTQ08-B2401C
Deep fog gray	深雾灰	XTQ08-B2401D



**Platform elevator car (three sides)**  
平台轿厢(三侧)

**Back wall:** powder coated steel plate frame+ grey rock slab  
**Side wall:** powder coated steel plate frame+laminated glass  
**Floor:** PVC  
 后壁:喷粉钢板框架+灰色岩板  
 侧壁:喷粉钢板框架+夹胶玻璃  
 地板:PVC

### Optional car 选配轿厢

Colour	颜色	Car model 轿厢型号
Champagne gold	香槟金 (RAL1035)	XTQ08-B2402A
Daiya blac	黛雅黑 (RAL9005)	XTQ08-B2402B
Dawn Moon White	皓月白 (RAL9010)	XTQ08-B2402C
Deep fog gray	深雾灰	XTQ08-B2402D

## Optional Decoration

### 装潢可选

#### Operation panel 操纵箱



**XCP33-B**  
**Panel:** Black glass  
**Frame:** Black aluminum alloy  
**Display:** 13.3-inch TFT touch screen  
**Language:** Chinese  
 面板: 黑色玻璃  
 边框: 黑色铝合金  
 显示: 13.3寸TFT触摸屏  
 语言: 中文

**Function:** Time, date, weather display  
 Theme Change  
 One click call for help  
 VIP floor lock  
 Child lock  
 WIFI function  
**功能:** 时间日期天气显示  
 主题更换  
 一键呼救  
 VIP楼层锁  
 儿童锁  
 WIFI功能

#### Operation panel 可选玻璃



Transparent glass  
透明玻璃



Blue star grey glass  
蓝星灰玻璃

#### Operation panel 按钮

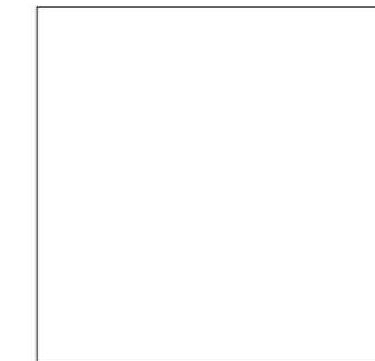


BR36F (black)  
BR36F (黑)

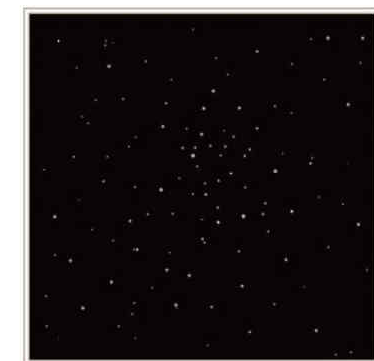


BR36F (white)  
BR36F (白)

#### Ceiling of the hoistway 井道顶

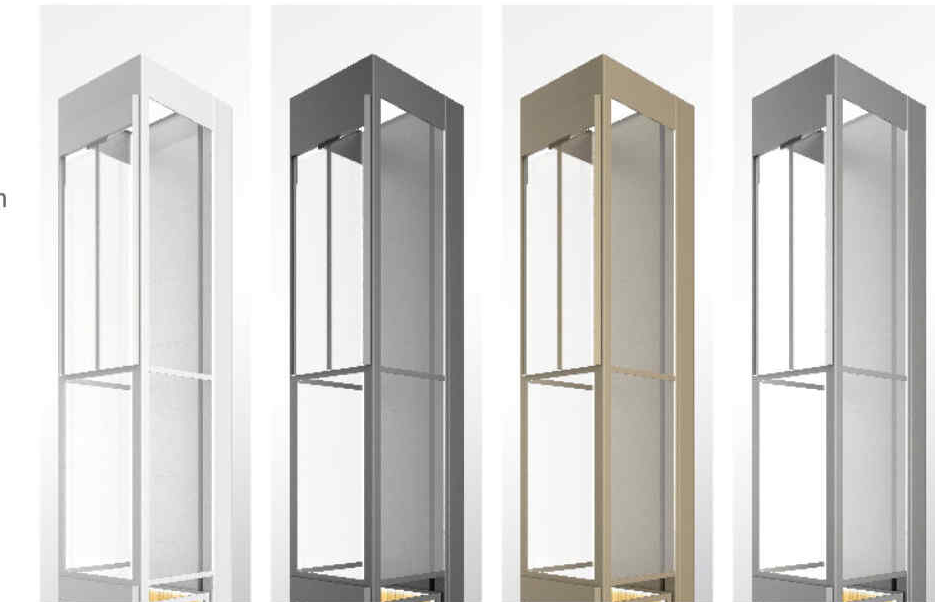


Large surface light source (standard)  
大面光源(标配)



Starry Sky ceiling (optional)  
星空顶(选配)

#### Aluminum alloy hoistway 铝合金井道



Dawn Moon White  
皓月白

Daiya blac  
黛雅黑

Champagne gold  
香槟金

Deep fog gray  
深雾灰

# Functional configuration of villa elevators

## 别墅电梯功能配置

● Standard ○ Optional

<b>Collection selection</b>	In automatic or driver mode, during the operation of the elevator, it responds to the command signal inside the car and automatically responds to the call for up and down. Passengers on any floor can call the elevator by registering the up and down call model.	●
<b>Automatically return to the base station</b>	When the set time is exceeded and there are still no internal instructions or floor calls, the elevator automatically returns to the base station to wait for passengers.	●
<b>Light curtain door protection</b>	The dedicated light curtain door protection system enhances the safety of elevators. The system can form a dense infrared three-dimensional cross light curtain at the elevator door, which can respond sensitively to any person or object entering its detection area, providing maximum safety protection for passengers entering and exiting.	●
<b>Maintenance operation</b>	The operational functions used by elevators during maintenance or debugging. When the operating conditions are met, pressing the up/down button can make the elevator move up/down at the maintenance speed point. Press the button continuously to keep the elevator running, and release the button to stop running.	●
<b>Direct docking</b>	Based on the principle of distance, automatically calculate the smooth curve of production from start to stop, without crawling, directly stopping at the level.	●
<b>Self rescue leveling operation</b>	When the elevator is in a non maintenance state and not stopped in the leveling area, as long as it meets the safety requirements for starting, the elevator will automatically run at a slow speed to the nearest leveling area.	●
<b>Emergency electric operation in the computer room</b>	The elevator control cabinet is equipped with an emergency electric operation device, which can be used for rescue in emergency situations.	●
<b>Self learning of Hoistway parameters</b>	Before the system runs quickly for the first time, it needs to self learn the parameters of the hoistway, including the height of each floor and the position of the forced deceleration switch.	●
<b>Self learning of motor parameters</b>	The system self learns the motor parameters before the first operation.	●
<b>Fan and lighting energy-saving mode</b>	When the set time is exceeded and there are still no internal commands or floor calls, the lighting and fan power in the car will be automatically cut off.	●
<b>Front and rear door service floor settings</b>	The system can select service floors for both the front and rear doors as needed.	●
<b>Service floor setting</b>	The system can flexibly choose to close or activate one or more elevator service building exhibition and stop floors as needed.	●
<b>Automatically adjust the position of the elevator car</b>	Every time the elevator reaches the end station position, the system automatically checks and corrects the position information of the car based on the first level forced deceleration switch, while assisting with the specially designed forced deceleration speed to completely eliminate top and bottom faults.	●
<b>Direction indication outside the hall and inside the car</b>	For the convenience of passengers to understand the direction of elevator operation, there are arrow shaped prompts on the control box panel inside the car and the call panel outside the hall indicating the direction of operation.	●
<b>Reverse automatic cancellation</b>	When the elevator reaches the terminal level or changes direction, all previously registered reverse instructions will be automatically cancelled.	●
<b>Door opening and closing fault protection</b>	When it is detected that the door has not been effectively closed after exceeding the set number of times, the system stops opening and closing the door and outputs a fault.	●
<b>Maintain classification settings for door opening time</b>	The system automatically determines different holding times for door opening, such as summoning to open the door, commanding to open the door, door protection opening, delayed opening, etc., based on the set time.	●
<b>Independent control of the through door</b>	When using a through door, the front and rear doors can be controlled separately.	●
<b>Forced deceleration monitoring function</b>	In automatic operation mode, the system monitors and corrects the position of the elevator car based on the position and action of the forced deceleration switch.	●
<b>Open door button, door area, open door</b>	When the elevator stops in the door area, you can press the door opening button in the car to reopen the doors that have been closed or not yet closed.	●
<b>Open the door outside the hall on this floor</b>	In the absence of other instructions or external calls, if the elevator car stops at a certain level, pressing the call button outside that level will automatically open the elevator car door.	●
<b>Repeatedly close the door</b>	After the elevator has been closed for a certain period of time, if the door lock has not been closed, the elevator will automatically open the door and then repeat the closing process.	●
<b>Full load straight ahead</b>	In automatic operation without a driver, when the car is fully loaded (usually 80% of the rated load), the elevator does not respond to call signals from outside the hall.	●
<b>Overload protection</b>	When the load capacity of the elevator car exceeds 110% of the rated load capacity, the elevator is not allowed to close the door and start. It must remain open at the level position of the station and cannot start running.	●
<b>Leveling fine-tuning</b>	The leveling accuracy can be fine tuned by adjusting the relevant parameters.	●
<b>Contactor contact detection and protection</b>	When the elevator detects an abnormal closing state of the contactor during operation or stop, the system automatically protects it.	●
<b>Motor overcurrent protection</b>	When the current of the motor is detected to be greater than the maximum allowable value, the system automatically protects.	●

Note: The above functions are only applicable to elevators with SJ-S3100 standard configuration.

● 标配 ○ 选配

<b>全集选</b>	在自动状态或司机状态, 电梯在运行过程中, 在响应轿内指令信号的同时, 自动响应上行, 下行时的召唤, 任何楼层的乘客, 都可通过登记上下召唤型号召唤电梯。	●
<b>自动返回基站</b>	当超过设定时间, 仍无内部指令和层站召唤时, 电梯自动返回基站等候乘客。	●
<b>光幕保护</b>	专用光幕门保护系统增强了电梯的安全性, 系统可在电梯门口形成密染的红外三维交叉光幕, 对于任何进入其探测区域的人或物体都能做出敏锐的反应, 为进出的乘客提供最大程度的安全保护。	●
<b>检修运行</b>	检修或者调试电梯时电梯使用的操作功能。当符合运行条件时, 按上/下行按钮可使电梯以检修速度 点动向上/向下运行。持续按下按钮, 电梯保持运行, 松动按钮即停止运行。	●
<b>直接停靠</b>	以距离为原则, 自动运算生产从启动到停产的平滑曲线, 没有爬行, 直接停靠在平层。	●
<b>自救平层运行</b>	当电梯处于非检修状态下, 且未停在平层区, 此时只要符合起动的安全要求, 电梯将自动以慢速运行至最近平层区。	●
<b>机房紧急电动运行</b>	电梯控制柜内设有紧急电动操作装置, 可用于紧急情况时的救援。	●
<b>井道参数自学习</b>	系统在首次快运行前, 需要对井道的参数进行自学习, 包括每层的层高, 强迫减速开关位置。	●
<b>电机参数自学习</b>	系统在首次运行前对电机参数进行自学习。	●
<b>风扇照明节能模式</b>	当超过设定时间, 仍无内部指令和层站召唤时, 则自动切断轿厢内照明, 风扇电源。	●
<b>前后门服务楼层设置</b>	系统可根据需要分别对前门和后门选择服务楼层。	●
<b>服务楼层设置</b>	系统可根据需要灵活选择关闭或激活某个或多个电梯服务楼层及停靠楼层。	●
<b>自动修正轿厢位置</b>	电梯每次运行到端站位置, 系统自动根据第一级强迫减速开关检查和修正轿用的位置信息, 同时辅助特制的强迫减速减速度彻底消除冲顶和蹲底故障。	●
<b>厅外及轿内方向指示</b>	为方便乘客了解电梯运行方向, 在轿内操纵箱面板及厅外召唤面板上有箭头状提示运行方向。	●
<b>反向自动消号</b>	当电梯运行到终端层站或者运行方向变更时, 将此前所登记的反向指令全部自动取消。	●
<b>开关门故障保护</b>	当检测到开关门超过设定次数后仍未有效关门, 系统停止开关门并输出故障。	●
<b>保持开门时间的分类设定</b>	系统根据设定的时间自动判别召唤开门, 指令开门, 门保护开门, 延时开门等不同的保持开门时间。	●
<b>贯通门独立控制</b>	使用贯通门时, 可分别单独控制前后门。	●
<b>强迫减速监测功能</b>	系统在自动运行模式下, 根据强迫减速开关位置, 以及开关动作情况来监测, 校正电梯轿厢的位置。	●
<b>开门按钮门区开门</b>	电梯停在门区时, 可以在轿厢中按开门按钮使电梯已经关闭或尚未关闭的门重新打开。	●
<b>本层厅外开门</b>	在无其他指令或外召的情况下, 若轿厢停在某一层站, 按下该层站外的召唤按钮后, 轿厢门自动打开。	●
<b>重复关门</b>	电梯持续关门一定时间后, 若门锁尚未关闭, 则电梯自动开门, 然后重复关门。	●
<b>满载直驶</b>	在自动无司机运行状态, 当轿内满载时(一般为额定负载的80%)电梯不响应经过的厅外召唤信号。	●
<b>超载保护</b>	当电梯轿厢的载重量超过额定载重量的110%时, 电梯不允许关门启动, 在层站平层位置保持开门状态, 不能启动运行。	●
<b>平层微调</b>	可通过相关参数的调整, 对平层精度进行微调。	●
<b>接触器触点检测保护</b>	电梯在运行护或者停止状态下, 检测到接触器的吸合状态异常时, 系统自动保护。	●
<b>电机过电流保护</b>	检测到电机的电流大于最大允许值时, 系统自动保护。	●

注: 上述功能项仅适用于SJ-S3100标准配置的电梯。

● Standard ○ Optional

<b>Power overvoltage protection</b>	When the power supply voltage is detected to be greater than the maximum allowable value, the system automatically protects.	●
<b>Motor overload protection</b>	Motor overload detected, system automatically protects.	●
<b>Encoder fault protection</b>	The entire system only uses one high-speed encoder for closed-loop vector control. If the encoder fails, the system will automatically shut down to prevent top and bottom crashing caused by unknown encoder faults.	●
<b>Fault duration record</b>	The system has 6 fault records, including information such as the time and floor where the fault occurred.	●
<b>Weighing signal compensation</b>	The system can use weighing signals in high-end applications to compensate for elevator start-up.	●
<b>Pre torque setting</b>	The system can output torque that matches the corresponding load in advance to ensure the comfort of the elevator.	●
<b>Door lock short-circuit detection</b>	In automatic operation mode, the elevator recognizes whether the door lock is abnormal every time the door is opened.	●
<b>Test run</b>	The testing operation includes fatigue testing of the new elevator, prohibition of external call response, prohibition of door opening and closing, shielding of end station limit switches, shielding of overload signals, and other testing operation methods.	●
<b>Removal of current ramp</b>	In the application field of permanent magnet synchronous motors, after the elevator slows down and stops, the maintenance current of the motor is removed through a ramp to avoid abnormal noise during this process.	●
<b>Repair and reduce carrier frequency</b>	In order to maximize the protection of the drive base while meeting the basic functions of elevator operation, an additional operating mode is added, which automatically adjusts the carrier frequency to 6KHz during maintenance operation.	●
<b>Wireless one click call for help</b>	By operating the call button on the control cabinet, make a call to the intercom host. When there is no response, the intercom host will automatically dial three sets of phone numbers (or mobile phones) set in sequence until connected.	●
<b>Absolute position</b>	The control cabinet can be equipped with a quantitative absolute position system, which can significantly reduce the number of hoistway components and optimize the hoistway space.	●
<b>Terminal floor protection</b>	When the elevator reaches the terminal floor and the running speed does not decrease to the preset value, the system will force deceleration to protect the safe operation of the elevator.	●
<b>Speed feedback detection function</b>	Once the system detects that the actual speed does not match the given speed, it will automatically disconnect the safety circuit and issue an alarm.	●
<b>STO</b>	Safe torque stop function, equipped with TUV certified contactless control cabinet, making elevator operation quieter.	●
<b>Drive equipment overheating</b>	When the temperature of the motor exceeds the preset value due to high temperature in the machine room or heating during operation, the elevator will automatically enter a protective state. The elevator stops nearby, opens the door for safe evacuation of passengers, and turns off the lighting and fans inside the bridge. After the temperature returns to normal, the elevator resumes normal operation.	●
<b>Integrated electric brake release function</b>	When encountering ARD function failure, professional personnel can be arranged to use electric brake release to rescue passengers.	●
<b>Start torque compensation</b>	To achieve better comfort during elevator start-up, the system calculates the load inside the car and optimizes it through torque compensation during start-up.	●
<b>Contactors anti inertia detection function</b>	Regardless of whether the elevator is in standby or running mode, the system will detect the status of the output relay. Once the contactor is found to be in an abnormal state, the system will sound an alarm.	●
<b>Integrated ARD function</b>	When there is a power outage in the elevator, the backup power supply in the control cabinet can be used to make the car run to the next floor and release passengers from the door; After the elevator power supply is normal, the elevator automatically returns to normal operation.	●
<b>Self rescue of operation</b>	When a passenger is trapped in the elevator car, if the elevator malfunction is a recoverable Class B or Class C malfunction and does not affect the safe operation of the elevator, the passenger can press the highest and lowest buttons simultaneously and hold them for more than 10 seconds. At this time, the elevator can temporarily block the malfunction, automatically run to the level position, open the door to release people, and lock the elevator.	●
<b>Child protection lock</b>	The external recruitment has password setting and elevator locking functions to prevent children from operating the elevator and avoid danger.	○
<b>Maintain classification settings for door opening time</b>	The system automatically determines different holding times for door opening, such as summoning door opening, command door opening, door protection door opening, and delayed door opening, based on the set time.	○
<b>Remote monitoring</b>	Upload elevator status and fault information to the Global Hawk platform through the IoT gateway, and monitor elevator operation data and faults in real-time.	○
<b>Smart IoT elevator control</b>	Through the IoT gateway, users can remotely perform elevator control operations such as calling and floor registration on the Xiaoxi Butler APP.	○

Note: The above functions are only applicable to elevators with SJ-S3100 standard configuration.

●标配 ○选配

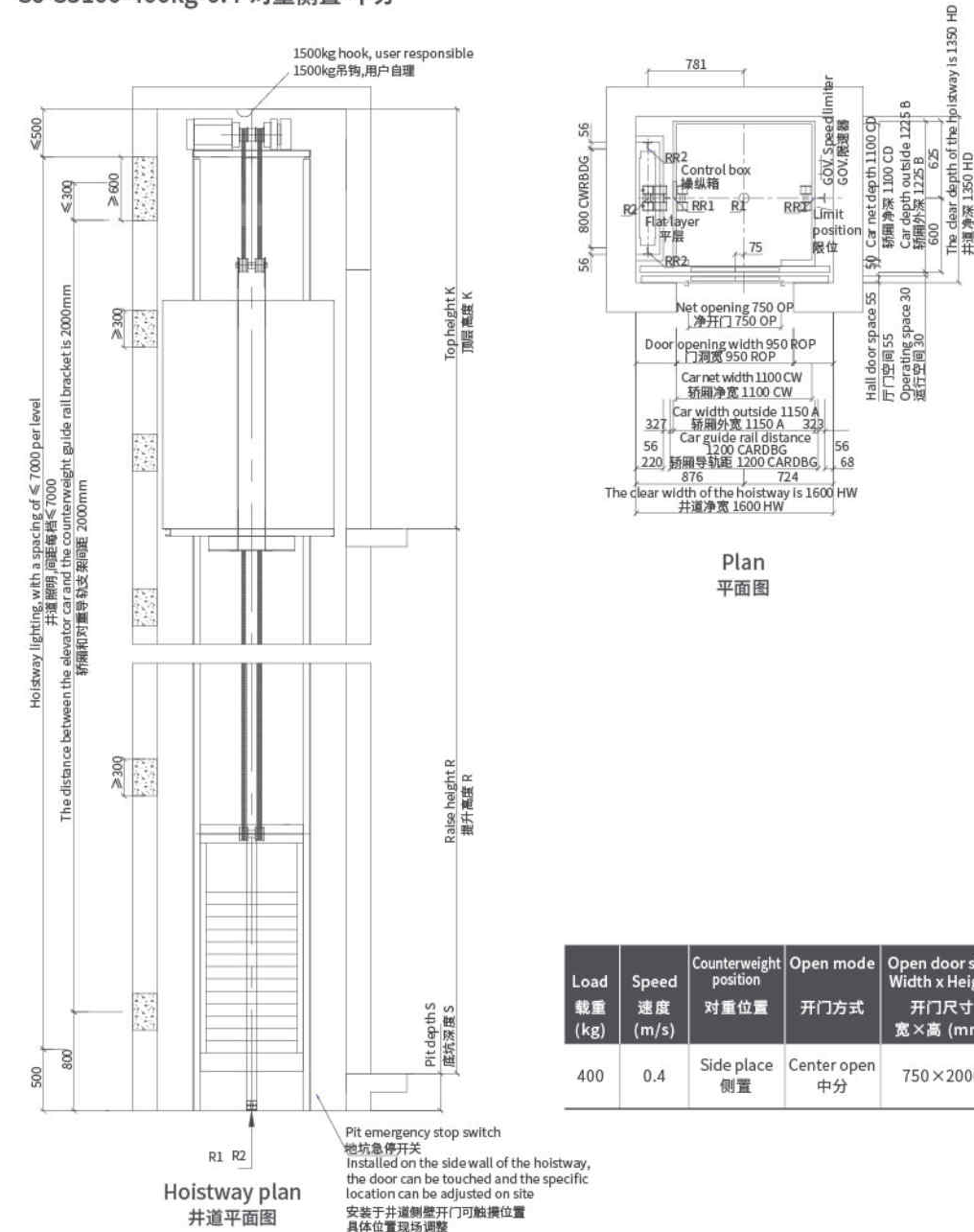
<b>电源过电压保护</b>	检测到电源电压大于最大允许值时,系统自动保护。	●
<b>电机过载保护</b>	检测到电机过载,系统自动保护。	●
<b>编码器故障保护</b>	全系统只使用一个高速编码器来进行闭环矢量控制,如果该编码器发生故障,系统自动停机,杜绝因无法得知编码器故障引起的冲顶蹲底的故障。	●
<b>故障历时记录</b>	系统具有6个故障记录,包括故障产生的时间余楼层等信息。	●
<b>称重信号补偿</b>	系统可以在高端应用场合中使用称重信号,对电梯的启动进行补偿。	●
<b>预转矩设置</b>	系统可预先输出与相应负载匹配的转矩,以保证电梯的舒适感。	●
<b>门锁短接检测</b>	电梯在自动运行模式下,每次开门到位均识别门锁是否存在异常。	●
<b>测试运行</b>	测试运行包括新电梯的疲劳测试运行,禁止外召相应,禁止开关门,屏蔽端站限位开关,屏蔽超载信号等测试运行方法。	●
<b>电流斜坡撤除</b>	在永磁同步电动机应用现场中,电梯运行减速停车后,电动机的维持电流通过斜坡的方式撤除,避免这个过程中电动机的异常噪声。	●
<b>检修降载波</b>	在满足电梯运行的基本功能的条件下,为了最大程度保护驱动器底座,增加一种运行模式,即在检修运行时载波频率自动调节到6KHz。	●
<b>无线一键呼救</b>	通过操纵箱上通话按钮,对控制柜对讲主机进行呼叫,当无应答时,对讲主机将自动向依次设置好的3组电话号码(或手机)进行拨号,直到接通为止。	●
<b>绝对位置</b>	控制柜可配量绝对位置系统,可大幅减少井道部件,优化井道空间。	●
<b>终端楼层保护</b>	当电梯运行到终端楼层时,运行速度没有减至预设值时,系统将强迫减速,保护电梯的安全运行。	●
<b>速度反馈检测功能</b>	系统一旦检测到实际速度与给定速度不符,将自动断开安全回路并发出警报。	●
<b>STO</b>	安全转矩停止功能,具有TUV认证的无接触器控制柜,电梯运行更加静谧。	●
<b>驱动设备过热</b>	由于机房温度过高或运行发热,电动机温度超过预设值时,电梯将自动进入保护状态。电梯就近停靠,开门安全疏散乘客并关闭桥内照明和电扇,温度正常后,电梯恢复正常运行。	●
<b>集成电动松闸功能</b>	当遇到ARD功能失效的情况下,可安排专业人员,使用电动松闸释放,进行乘客的救援。	●
<b>启动力矩补偿</b>	为使电梯启动时获得更好的舒适感,系统对轿厢内载荷进行计算,并通过启动时的力矩补偿给予优化	●
<b>接触器反馈检测功能</b>	无论电梯处于待机状态还是运行状态,系统将检测输出继电器的状态,一旦发现接触器处于非正常状态,系统将报警。	●
<b>集成ARD功能</b>	电梯停电时,可通过控制柜内的备用电源使得轿厢运行到下一层站并门放出乘客;电梯电源正常后,电梯自动恢复到正常运行状态。	●
<b>操纵箱自救</b>	乘客被困轿厢时,若电梯故障为可恢复的B类或C类故障且不影响电梯安全运行的情况下,乘客可同时按下最高层和最底层按钮并保持10秒以上,此时电梯可暂时屏蔽故障,自动运行至平层位置,开门放人,电梯锁定。	●
<b>童锁</b>	外招具有密码设置和锁梯功能,预防儿童操作电梯,避免危险发生。	○
<b>保持开门时间的分类设定</b>	系统根据设定的时间自动判别召唤开门、指令开门、门保护开门、延时开门等不同的保持开门时间。	○
<b>远程监控</b>	通过物联网关,将电梯的状态信息和故障信息上传到全球鹰平台,实时监控电梯运行数据及故障。	○
<b>智慧物联梯控</b>	通过物联网关,用户可通过小西管家APP远程对电梯进行呼梯、楼层登记等梯控操作。	○

注:上述功能项仅适用于SJ-S3100标准配置的电梯。

# Civil engineering parameters (steel belt villa ladder)

## 土建参数(钢带别墅梯)

SJ-S3100-400kg-0.4- Counterweight Side Placement - Center Split  
 SJ-S3100-400kg-0.4-对重侧置-中分

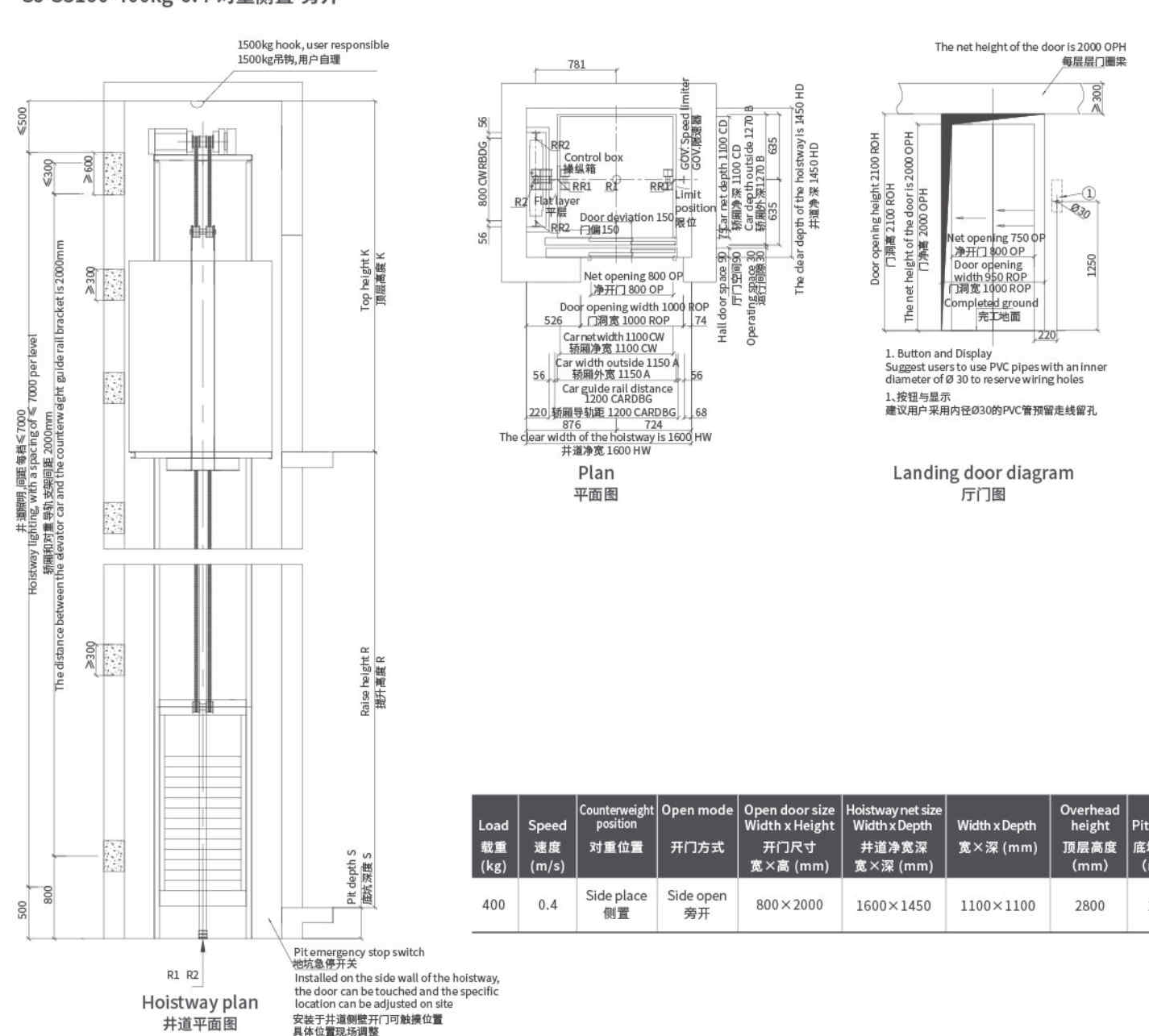


Load 载重 (kg)	Speed 速度 (m/s)	Counterweight position 对重位置	Open mode 开门方式	Open door size Width x Height 开门尺寸 宽 x 高 (mm)	Hoistway net size Width x Depth 井道净宽深 宽 x 深 (mm)	Width x Depth 宽 x 深 (mm)	Overhead height 顶层高度 (mm)	Pit depth 底坑深度 (mm)
400	0.4	Side place 侧置	Center open 中分	750 x 2000	1600 x 1350	1100 x 1100	2800	250

# Civil engineering parameters (steel belt villa ladder)

## 土建参数(钢带别墅梯)

SJ-S3100-400kg-0.4- Counterweight side position - Side open  
 SJ-S3100-400kg-0.4-对重侧置-旁开

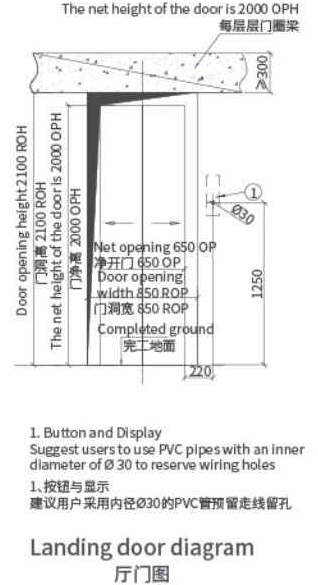
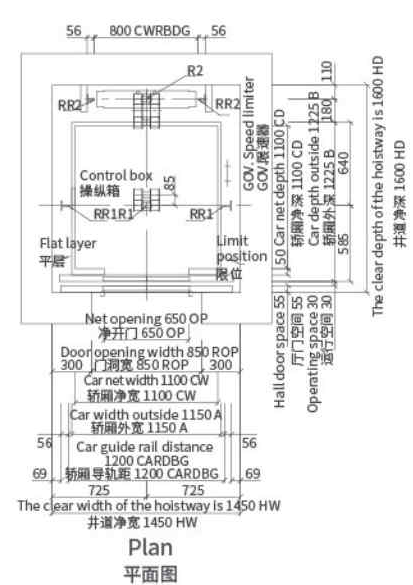
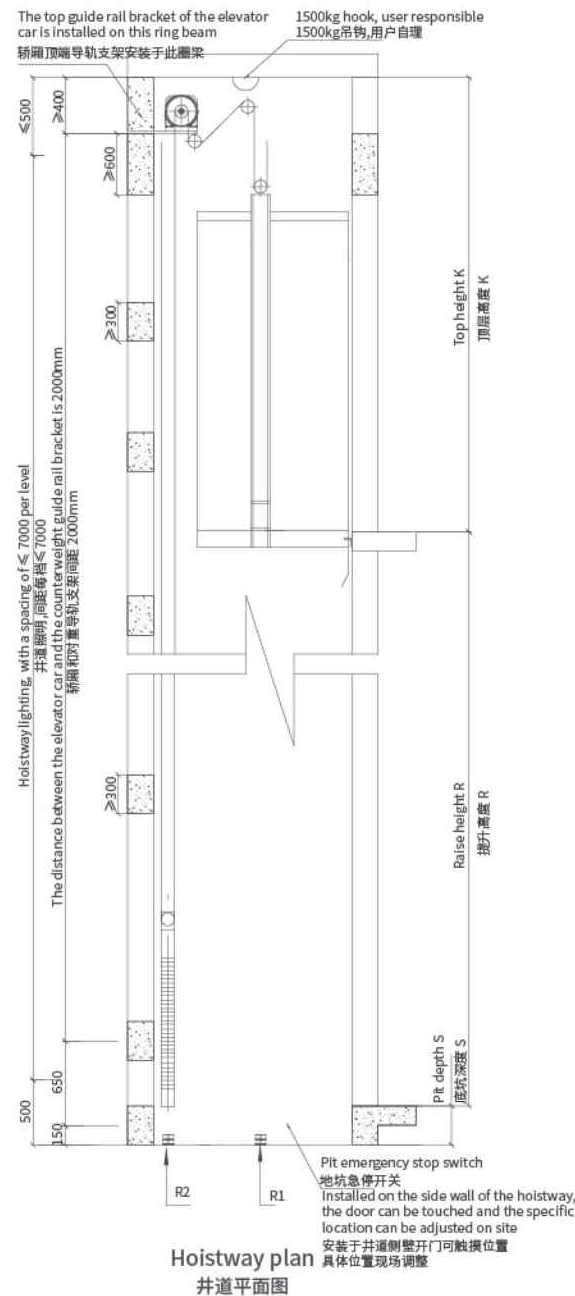


Load 载重 (kg)	Speed 速度 (m/s)	Counterweight position 对重位置	Open mode 开门方式	Open door size Width x Height 开门尺寸 宽 x 高 (mm)	Hoistway net size Width x Depth 井道净宽深 宽 x 深 (mm)	Width x Depth 宽 x 深 (mm)	Overhead height 顶层高度 (mm)	Pit depth 底坑深度 (mm)
400	0.4	Side place 侧置	Side open 旁开	800 x 2000	1600 x 1450	1100 x 1100	2800	250

# Civil engineering parameters (steel belt villa ladder)

## 土建参数(钢带别墅梯)

### SJ-S3100-400kg-0.4- Counterweight back position - Center open SJ-S3100-400kg-0.4-对重后置-中分

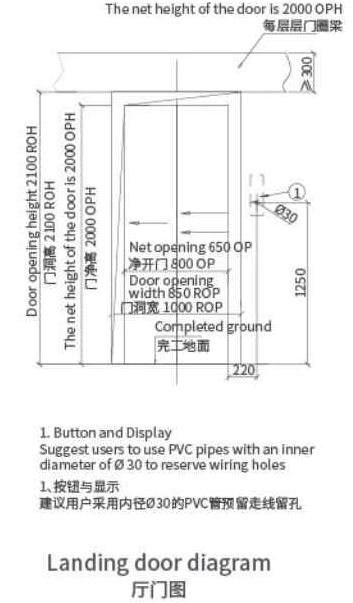
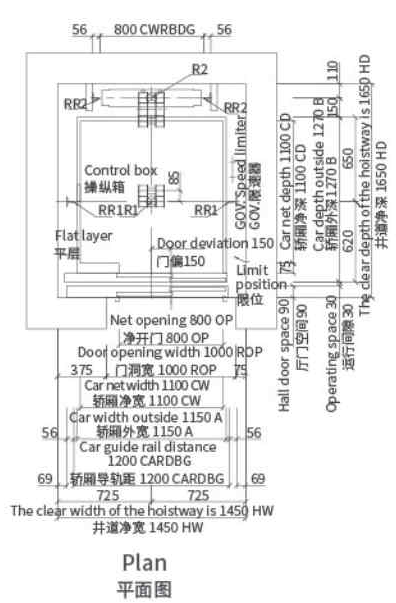
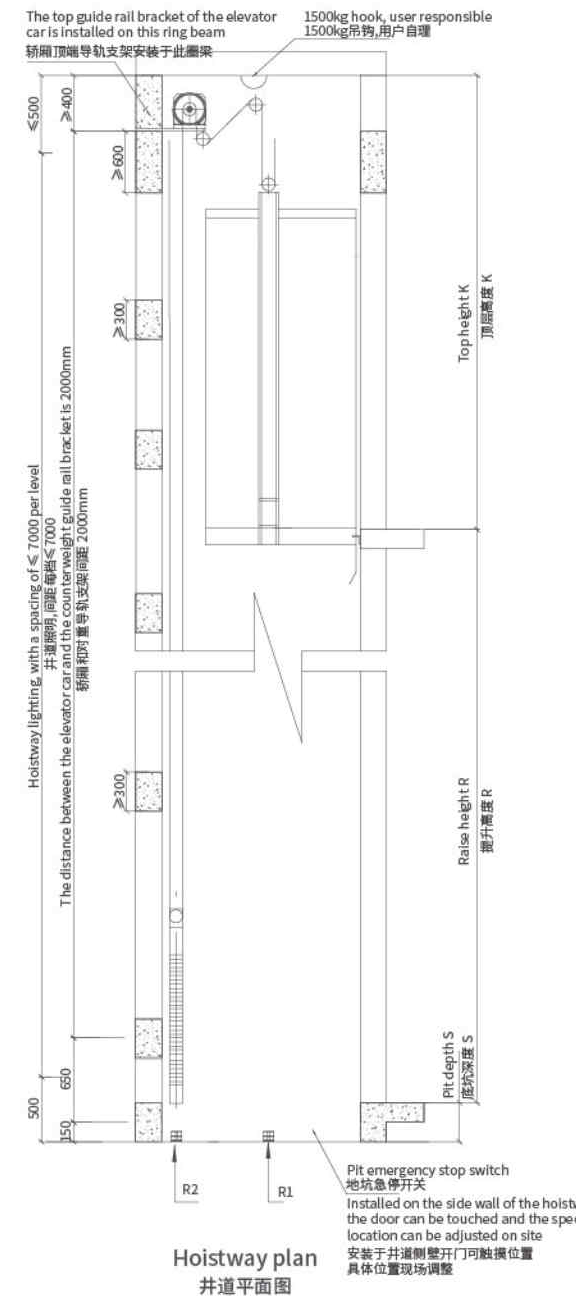


Load 载重 (kg)	Speed 速度 (m/s)	Counterweight position 对重位置	Open mode 开门方式	Open door size Width x Height 开门尺寸 宽 x 高 (mm)	Hoistway net size Width x Depth 井道净宽深 宽 x 深 (mm)	Width x Depth 宽 x 深 (mm)	Overhead height 顶层高度 (mm)	Pit depth 底坑深度 (mm)
400	0.4	Back place 后置	Center open 中分	750 x 2000	1600 x 1350	1100 x 1100	2800	250

# Civil engineering parameters (steel belt villa ladder)

## 土建参数(钢带别墅梯)

### SJ-S3100-400kg-0.4- Counterweight back position - Side open SJ-S3100-400kg-0.4-对重后置-旁开

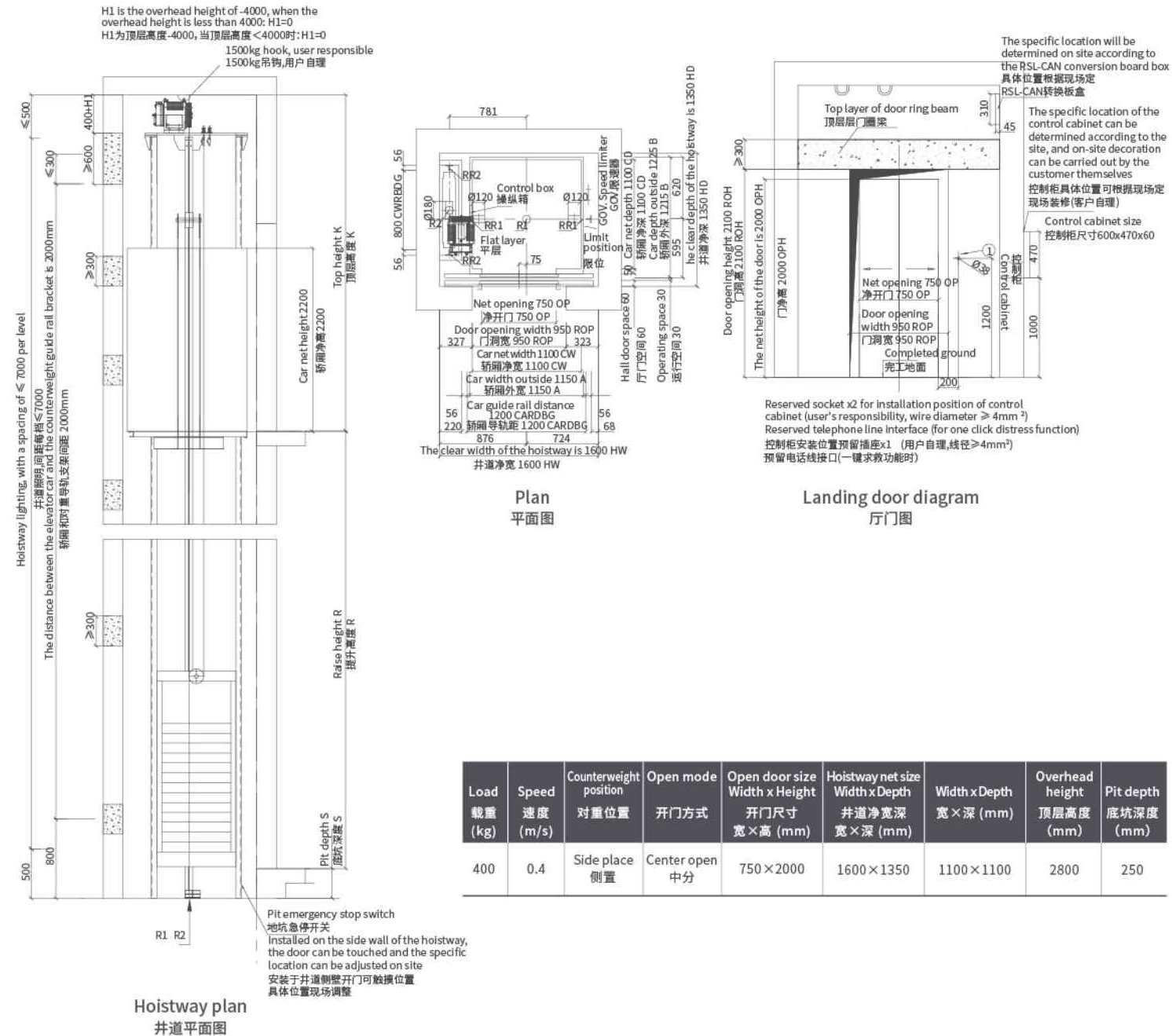


Load 载重 (kg)	Speed 速度 (m/s)	Counterweight position 对重位置	Open mode 开门方式	Open door size Width x Height 开门尺寸 宽 x 高 (mm)	Hoistway net size Width x Depth 井道净宽深 宽 x 深 (mm)	Width x Depth 宽 x 深 (mm)	Overhead height 顶层高度 (mm)	Pit depth 底坑深度 (mm)
400	0.4	Back place 后置	Side open 旁开	800 x 2000	1600 x 1450	1100 x 1100	2800	250

# Civil engineering parameters (steel wire rope villa ladder)

## 土建参数(钢丝绳别墅梯)

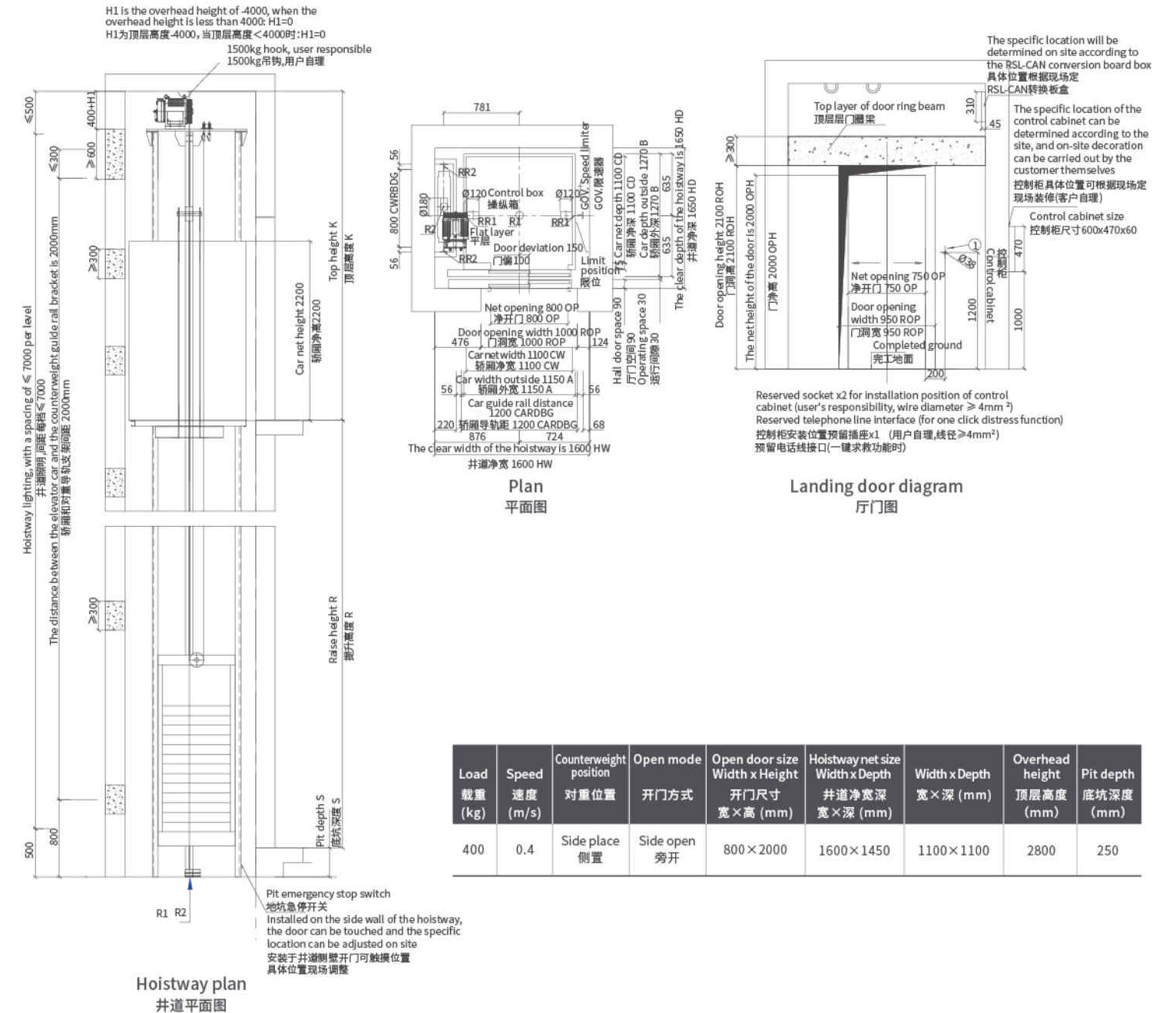
### SJ-S3100-400kg-0.4- Counterweight back position - Center open SJ-S3110-400kg-0.4-对重侧置-中分



# Civil engineering parameters (steel wire rope villa ladder)

## 土建参数(钢丝绳别墅梯)

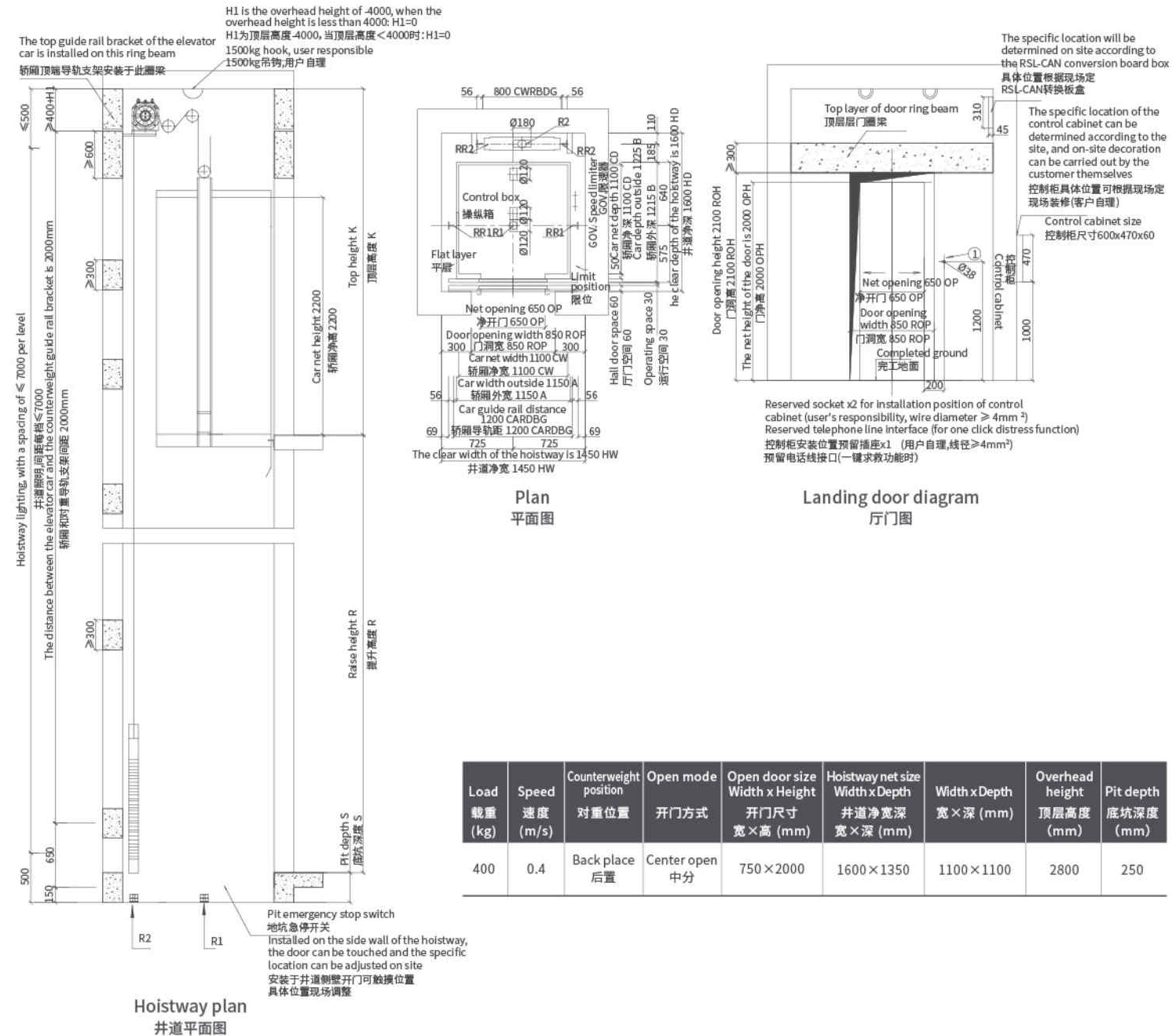
### SJ-S3100-400kg-0.4- Counterweight back position - Side open SJ-S3110-400kg-0.4-对重侧置-旁开



# Civil engineering parameters (steel wire villa ladder)

## 土建参数(钢丝绳别墅梯)

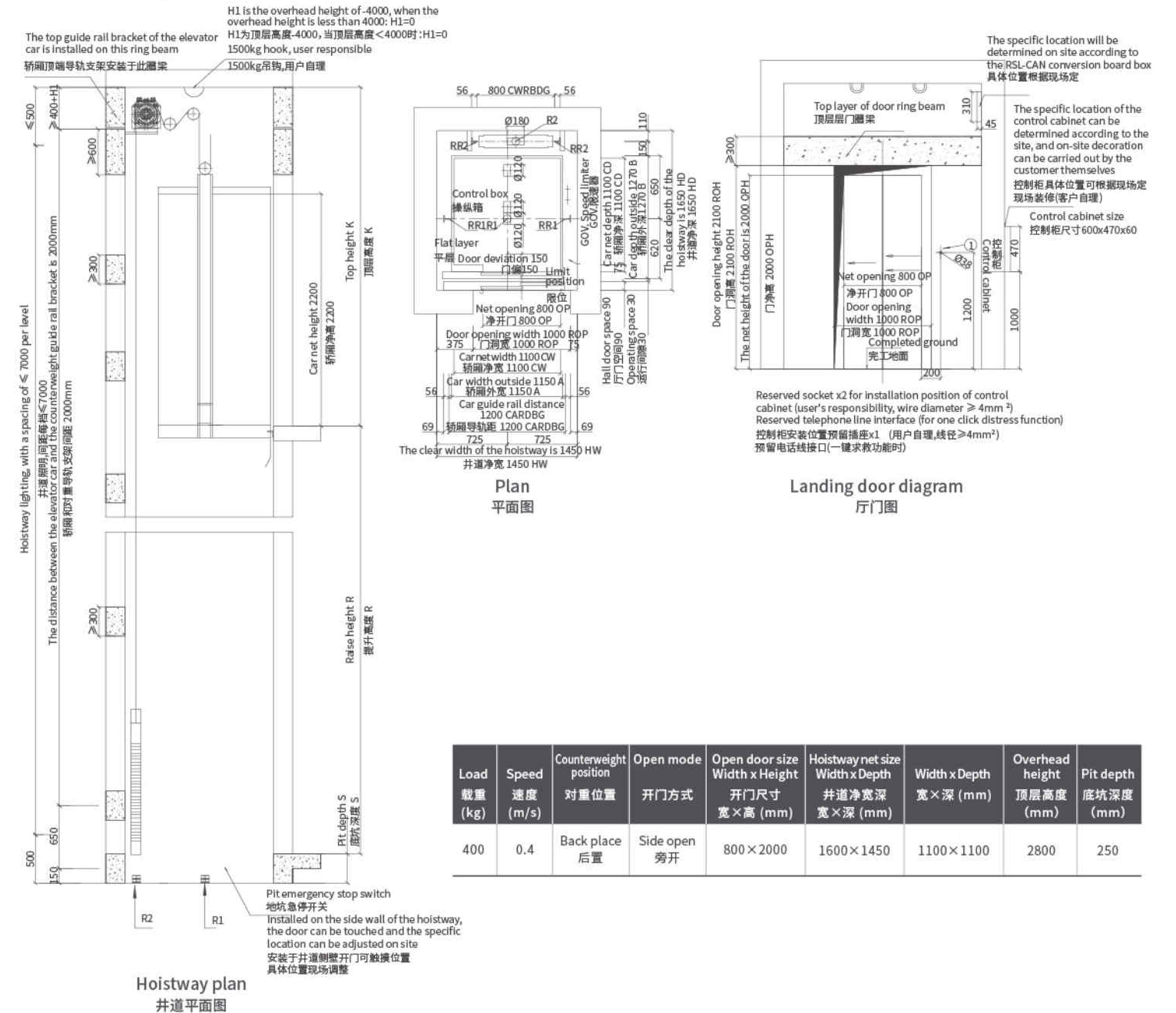
### SJ-S3110-400kg-0.4- Counterweight back position - Center open SJ-S3110-400kg-0.4-对重后置-中分



# Civil engineering parameters (steel wire villa ladder)

## 土建参数(钢丝绳别墅梯)

### SJ-S3110-400kg-0.4- Counterweight back position - Side open SJ-S3110-400kg-0.4-对重后置-旁开





## Civil engineering parameters (sightseeing villa elevator)

### 土建参数(观光别墅梯)

#### SJ-S3100-G-400kg-0.4-Parameter Table

#### SJ-S3100-G-400kg-0.4-参数表

Load 载重 (kg)	Speed 速度 (m/s)	Counterweight position 对重位置	Open mode 开门方式	Open door size Width x Height 开门尺寸 宽×高 (mm)	Hoistway net size Width x Depth 井道净宽深 宽×深 (mm)	Car net size Width x Depth 轿厢净宽深 宽×深 (mm)	Overhead height 顶层高度 (mm)	Pit depth 底坑深度 (mm)
400	0.4	Side place 侧置	Center open 中分	750×2000	1600×1350	1100×1100	2900	270
			Side open 旁开	800×2000	1600×1450	1100×1100		
			Center open double fold 中分双折	800×2000	1600×1450	1100×1100		

### Technical conditions for elevator civil engineering

- All buildings inside the hoistway must meet fire safety requirements.
- The hoistway must be vertical, and the horizontal size of the hoistway must be the minimum clearance size, with a vertical error of 0 to +15mm/0 to 15m.
- When there is a space accessible to personnel below the bottom of the pit on solid pile piers, or inquire with the elevator manufacturer about installing counterweight safety clamps.
- Before installing the elevator, all floor doors and openings must be equipped with safety enclosures with a height of not less than 1.2 meters, and must be able to withstand the indicated forces.
- The reserved holes for elevator hall doors, call signs, and other reserved holes need to be backfilled and decorated after the elevator installation is completed.
- The national standard requires that the hoistway wall should have the following mechanical strength, that is, when a force of 300N is evenly distributed on a circular or square area of 5 square cm, acting vertically on any point of the hoistway wall, it should:
  - Permanent deformation not exceeding 1mm;
  - Elastic deformation not exceeding 15mm
- When the distance between two adjacent floor door sills exceeds 11 meters, a safety door that cannot be opened into the hoistway should be installed between them. The size of the safety door should not be less than 350mm wide and 1800mm high. The safety door should be equipped with a lock that can be opened with a key. When the door is opened, it can be closed and locked without a key. Even when locked, it should be able to be opened from inside the hoistway without the need for a key.

- 井道内一切建筑必须达到防火要求。
- 井道必须垂直,井道水平尺寸为最小净空尺寸,且垂直误差0~+15mm/0~15m。
- 当底坑底面下有人能达到的空间存在实心桩墩上,或向电梯厂家询问安装对重安全钳。
- 电梯安装之前,所有层门门洞必须设有高度不小于1.2米的安全防护围封,并确保能承受所示各力。
- 电梯厅门、呼梯显示预留洞及其他预留孔洞在电梯安装完半时需进行回填装修。
- 国标要求井道壁应具有下列的机械强度,即用一个300N的力,均匀分布在5平方cm的圆形或方形面积上,垂直作用在井道壁的任一点上,应:
  - 永久变形不大于1mm;
  - 弹性变形不大于15mm
- 当两相邻层门地坎间距超过11米时,其间应设置一不得向井道内开启的安全门,安全门的尺寸不得小于350mm宽1800mm高。安全门应装设用钥匙开启的锁,当门开启后不用钥匙亦能将其关闭和锁住,即使在锁住情况下也应在不需要钥匙的情况下从井道内部打开。

### User precautions 用户注意事项

- The civil engineering technical conditions are an important component of elevator civil engineering layout and must be strictly followed. For any matters not covered, please refer to the relevant provisions of the National Code for Manufacturing and Safety of Household Elevators GB/T 21739-2008.
- If the construction of the earth building is not carried out in accordance with this clause and the layout plan, the user shall be responsible for rectification, and any consequences arising therefrom shall be borne by the user.
- If there are any changes to the dimensions of the above hoistways, please notify our company in writing in a timely manner and obtain our company's approval before making any changes.

- 土建技术条件为电梯土建布置的重要组成部分,必须严格遵守。未尽事宜,请参阅国家家用电梯制造与安全规范GB/T 21739-2008相关条款。
- 如土建未按本条款及布置图施工,由用户负责整改,由此而造成的后果均由用户承担。
- 以上井道尺寸如有变更,请及时以书面形式通知我公司,且要得到我公司认可方能更改。

### 电梯土建技术条件

- The bottom pit should be waterproof, and if there is a water accumulation pit, it should be located at the corner of the wall.
- According to the requirements in the technical parameter table, pull the power supply to the computer room, install a protected switch, and lock it. The fluctuation range of the power supply should not exceed  $\pm 7\%$ . The power neutral wire and grounding wire should be separated, and the grounding resistance value should not exceed 4  $\Omega$ .
- All loads indicated in the diagram, unless otherwise specified, include impact correction, and the strength of the hoistway wall and pit must be able to withstand the forces shown.
- The user indicated in the picture needs to take care of themselves (such as pre embedded steel plates), which needs to be pre-set.
- The temperature in the computer room should be maintained at 5-40 °C. The computer room should be flat and must be able to withstand forces of no less than 7.0kN per square meter.
- Users need to set up a rescue duty room and lay communication lines leading to the computer room. When the distance between the lines is not more than 500 meters, lay one six core twisted pair shielded wire ( $3 \times 2 \times 0.75\text{mm}^2$ ), and when it is greater than 500 meters, lay one Category 5 wire. Floor standard value uniformly distributed live load.
- If the hoistway structure is a steel structure, it is recommended to use 150x150x6mm square tubes for the columns and 100x100x5mm square tubes for the crossbars. The spacing between the crossbars should be arranged in 1500mm intervals, and chemical anchor bolts should be used to fix the top, bottom, and middle of each floor of the steel frame to the building.

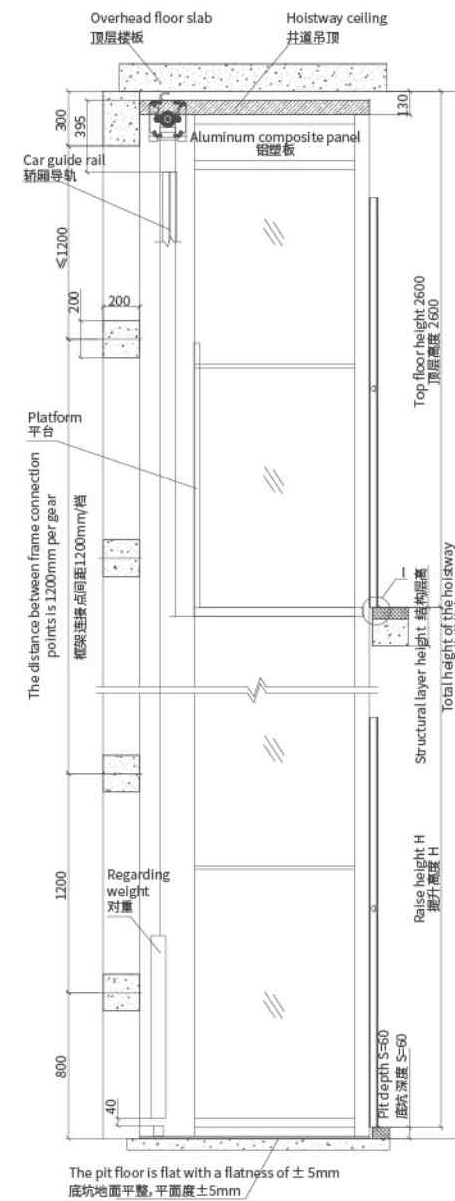
- 底坑内应防水,若有积水坑,应设在墙角处。
- 根据技术参数表中的要求,把电源拉到机房并设带保护的开关且上锁。电源波动范围不应超过 $\pm 7\%$ 。电源零线和接地线应分开,且接地电阻值不大于4 $\Omega$ 。
- 图中标明的所有载荷,除特别注明外都包含冲击修正量,井道墙和底坑的强度必需能承受所示各力。
- 图中标明的用户自理(预埋钢板等),需预先设置。
- 机房中的温度应保持在5~40°C,机房应平整且必须能够承受不小于7.0kN每平方米的需能承受所示各力。
- 用户需设立救援值班室,并铺设通往机房的通讯线,当走线距离不大于500米时铺设1根六芯双绞屏蔽线( $3 \times 2 \times 0.75\text{mm}^2$ ),大于500米时铺设1根五类线。楼面标准值均布活荷载。
- 如井道结构为钢结构,推荐立柱采用150x150x6mm方管,横档采用100x100x5mm方管,横档间距按1500mm一档布局,在钢架的顶部、底部及每层楼中间与建筑采用化学锚栓固定。

## Civil engineering parameters (platform lift)

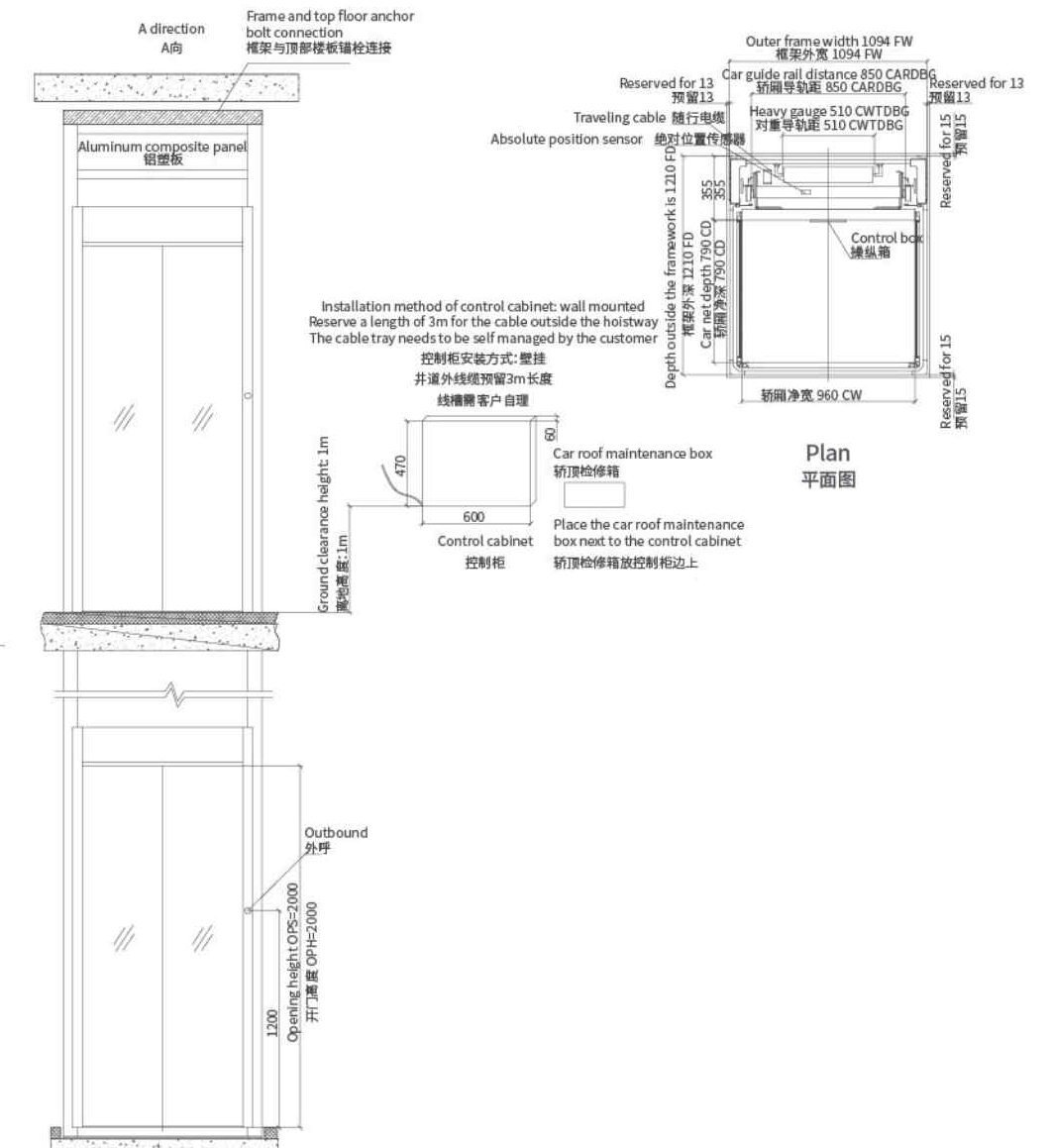
### 土建参数(平台梯)

#### SJ-T1000 platform lift

#### SJ-T1000平台梯



Hoistway plan  
井道平面图



Hoistway plan  
井道平面图